



# 2016 AUSTRALIAN PRODUCT CATALOGUE



# Innovation, Quality & Reliability

LSC has been at the forefront of the Lighting Industry for over 35 years, forging an enviable reputation for innovative products, consistent reliability and unequalled product performance.

The latest addition to our range, the Mantra Lite, has already become the fastest selling console in the history of LSC. The first three production runs were all sold out before they were completed and we have expanded our manufacturing capacity to meet the continued demand.

The last 12 months have also seen continued expansion in our export sales, with large quantities of LSC dimmers being sold to the Production Rental, Theatrical, Film and TV markets in Europe and beyond. Our US office has continued to increase our penetration into the USA, particularly in the House of Worship market, where LSC products have an enviable reputation for ease of use and reliability.

LSC is the only Australian manufacturer of Entertainment Lighting Control Equipment who still manufacture all of their products in Australia. Our goal is to offer reliable innovative quality products, designed to the highest international standards, whilst remaining great value for money.



# CLARITY LX-SERIES



Programmer



Rig View



Playback with Fader Ident



Presets & Pallets



Media Server Integration



## *The future of lighting control is crystal clear*

Following on from the phenomenal success of the Clarity PC/Mac based software, the **Clarity LX** consoles are the natural evolution of the Clarity product range. Designed as a joint venture between **LSC** and **OpenClear**, the **Clarity LX** range of fully integrated lighting and multi-media consoles, have become synonymous with redefining the limits of control to a new high for users of lighting and video.

The **Clarity LX** range comprises three models, the **LX300**, **LX600** and **LX900** all with touch screens, multiple programmers, unlimited undo/redo, FaderIdent™ for playback mode indication, media server integration, LED pixel mapping and innovative Rig Schematic patching, that allows importing of rig or venue images to overlay patched fixtures making your fixture selection both quick and easy.

Built on the principle of SPICE (Simple Powerful Intuitive Comfortable Elegant) the **Clarity LX** range have set the new industry standard for simple to use consoles whilst retaining all the top-end features required for large scale arena, theatre and TV shows.



LX600

CODE	DESCRIPTION
LX300	Clarity LX300 — fully integrated lighting and media console with 4 DMX outputs, MIDI, 4,000 ch control, 11 colour touch screens, 15 playbacks with FaderIdent, Grand Master and DBO. Supplied with 2 x LED-LITE, printed manual and dustcover.
LX600	Clarity LX600 — fully integrated lighting and media console with 4 DMX outputs, 8,000 ch control, 9 colour touch screens, 15 motorised playbacks with FaderIdent, motorised Grand Master and DBO & slide out keyboard. Supplied with 2 x LED-LITE, printed manual and dustcover.
LX900	Clarity LX900 — fully integrated lighting and media console with 6 DMX outputs, 2 DMX inputs, 16,000 ch control, 11 colour touch screens, 30 motorised playbacks with FaderIdent, motorised Grand Master and DBO, & slide out keyboard. Supplied with 2 x LED-LITE, printed manual and dustcover.





# CLARITY LX-SERIES



LX300

## Software Highlights

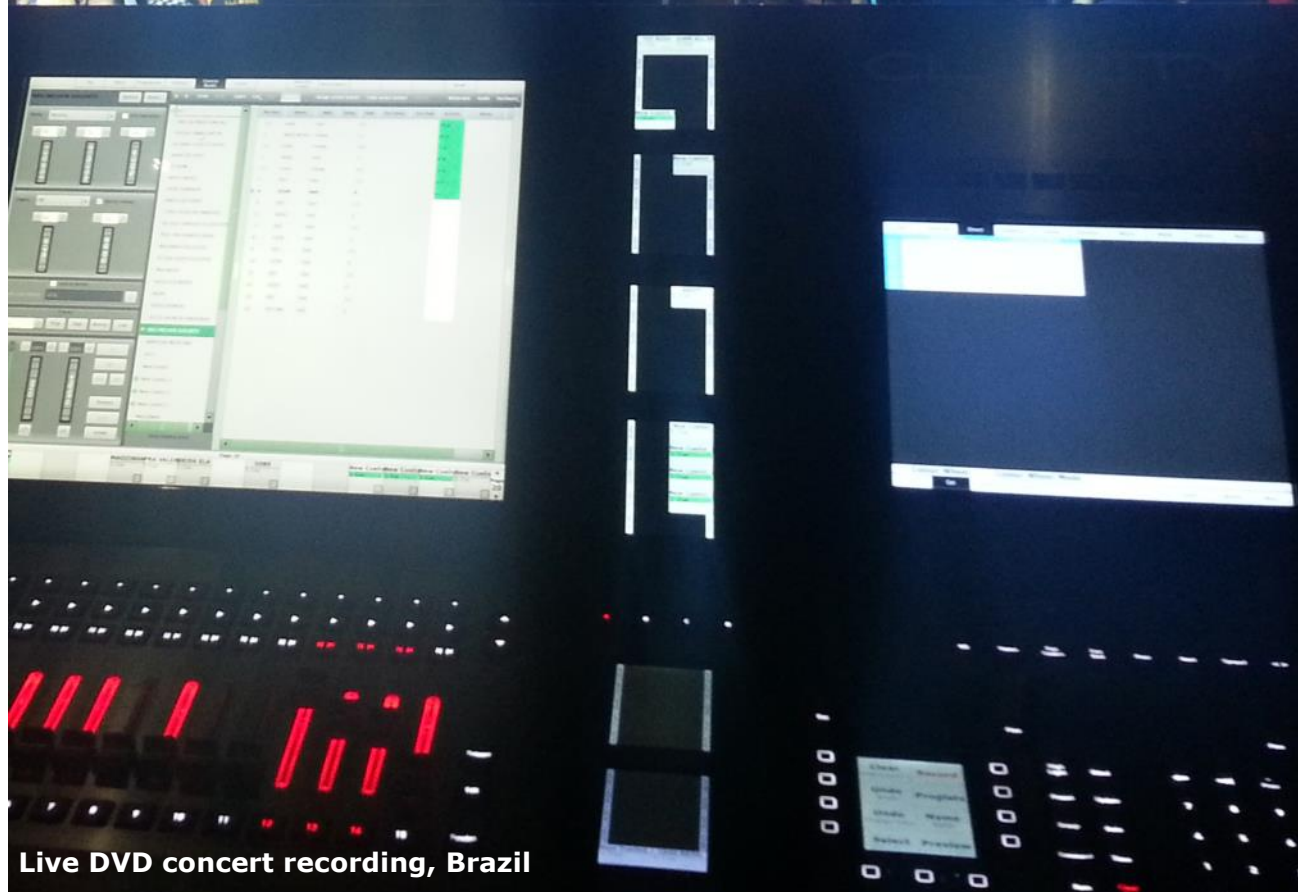
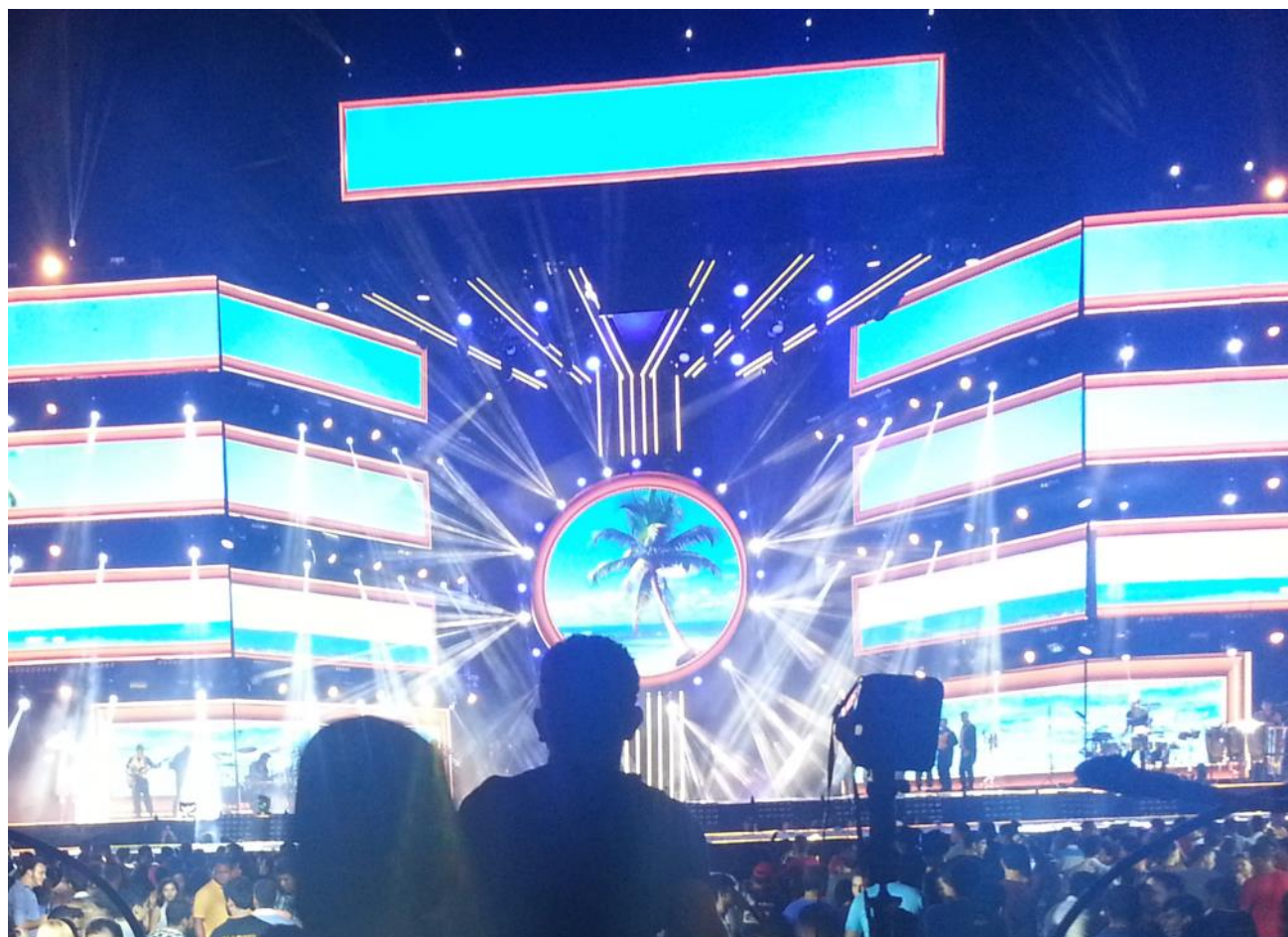
- Full Drag & Drop Patching with Intelligent Fixture Cloning utilising the Carallon fixture library
- Rig View with 2D simulation and easy Fixture selection, import your own images or rig plans
- Multiple programmers, each with unlimited Undo/Redo, work on different parts of the show anytime
- Media Server integration with thumbnail representation - works with all industry standard Media Servers
- LED pixel mapping with picture and video playback—import any standard media files
- Powerful Dynamics Editor and Effects Engine with smooth crossfading of effects
- Freesets—Reusable Palletes & Presets that can be applied to any type & quantity of fixtures
- Time Presets and Live Time Busking interface
- Unlimited Groups, Presets, Freesets, Cues and Chases
- Audio Playback - time stamp any audio file against your cue lists and playback your entire A/V show on the press of a button, ideal for followspot calls, sound FX etc
- MIDI / SMPTE Time Synchronisation, Real time calendar/scheduler, OSC for remote control and tablet integration
- Full Tracking Cuelists with Macro scripts and Undo/Redo of Cue Record/Delete
- And much more...



LX900

For more information visit [www.claritylx.com](http://www.claritylx.com)

**OPEN  
CLEAR**



Live DVD concert recording, Brazil



# CLARITY LX-SERIES

<u>Hardware</u>	LX300	LX600	LX900
<b>Displays</b>	1 x 10.4" 800×600 pixel touch screen, plus individual 120×140 pixel full colour screens for each playback. External DVI monitor.	1 x 10.4" 800×600 pixel touch screen, plus 1 x 17" 1280×1024 touch screen mounted on a pivoting panel	1 x 10.4" 800×600 pixel touch screen, plus 2 x 17" 1280×1024 touch screens mounted on a pivoting panel
<b>Fader Playbacks</b>	99 split pages of 15 x 60mm faders with RGB indicator, each with Select, Go, Pause/Back buttons. 99 pages split into two groups.	99 split pages of 15 x 60mm motorized faders with RGB indicator, each with Select, Go, Pause/Back buttons. 99 pages split into two groups	99 split pages of 30 x 60mm motorized faders with RGB indicator, each with Select, Go, Pause/Back buttons. 99 pages split into two groups
<b>Button Playbacks</b>	15 x Button only playbacks, each with Select/Go/Pause-Back buttons.	4 pages of 60 x Action Buttons for Group/Palette/Preset/Cue/Macro access - each with LCD touch screen for labelling and advanced control.	4 pages of 60 x Action Buttons for Group/Palette/Preset/Cue/Macro access - each with LCD touch screen for labelling and advanced control.
<b>Programmer</b>	1 x Programmer module comprising 10.4" touch screen, 20 feature buttons, 4 push/turn encoders with eight modifier buttons. Full Numeric Keypad, 2 x 10 button banks, Intensity wheel and 8 Key-Control buttons with full colour LCD labelling.	1 x Programmer module comprising 10.4" touch screen, 20 feature buttons, 4 push/turn encoders with eight modifier buttons. Full Numeric Keypad, 2 x 10 button banks, Intensity wheel and 8 Key-Control buttons with full colour LCD labelling.	1 x Programmer module comprising 10.4" touch screen, 20 feature buttons, 4 push/turn encoders with eight modifier buttons. Full Numeric Keypad, 2 x 10 button banks, Intensity wheel and 8 Key-Control buttons with full colour LCD labelling.
<b>Capacity</b>	From 4,000 DMX slots	From 8,000 DMX slots	From 16,000 DMX slots
<b>Split Crossfade</b>	None	Any pair of faders can be assigned into Split mode	Dedicated 2 x 100mm Motorised faders with dedicated full colour LCD display, Select, Go and Pause/Back buttons
<b>Keyboard</b>	External USB alphanumeric Keyboard (not included)	Slide Out Alphanumeric Keyboard with Trackpad	Slide Out Alphanumeric Keyboard with Trackpad
<b>External Displays</b>	Single external DVI-D out	Dual external DVI-D out	Dual external DVI-D out
<b>G.M.</b>	Grand Master + DBO	Motorised Grand Master + DBO	Motorised Grand Master + DBO
<u>Inputs / Outputs</u>			
<b>Local</b>	4 x DMX512-A output connectors (XLR5)	4 x DMX512-A output connectors (XLR5)	6 x DMX512-A output connectors + 2 x DMX512-A input connectors (XLR5)
<b>Protocols</b>	DMX512-A, RDM, Art-Net, sACN	DMX512-A, RDM, Art-Net, sACN	DMX512-A, RDM, Art-Net, sACN
<b>MIDI</b>	MIDI In, Out, Thru	MIDI In, Out, Thru	MIDI In, Out, Thru
<b>SMPTE</b>	N/A	SMPTE LTC input via XLR3	SMPTE LTC input via XLR3
<b>Audio</b>	Stereo Audio In & Out via 6.5mm sockets	Stereo Audio In & Out on balanced XLR3	Stereo Audio In & Out on balanced XLR3
<b>Ethernet</b>	Dual Gb Ethernet ports	Dual Gb Ethernet ports	Dual Gb Ethernet ports
<b>Storage</b>	Solid State Disc	Solid State Disc	Solid State Disc





LIGHTING SYSTEMS

# CLARITY



Control Desks



Mac computer not included in Clarity pricing.



**Simply** regarded as one of the most powerful software packages for lighting and media control available on the market today, **LSC CLARITY** has rewritten the specification for what a computer based lighting control system should be.

Available in PC or Native Mac versions, the extensive feature list is **simply brilliant**:

- Powerful Lighting & Media Control Software
- Smart control of multi-array LEDs with simple control of individual segments
- Seamless fixture substitution with cloning that really works
- Media Server Integration with full CIP and MEX support
- Built In Pixel Mapping using still images and full motion video
- Audio fixtures, allows programming & playback of multiple audio with fade in/out
- Freetests: - the next generation of Presets
- Multiple programming sessions available
- Rig view - select fixtures quickly and easily
- Powerful Dynamics Editor and Effects Engine with smooth crossfading of effects
- Art-Net, sACN and optional USB/DMX output
- And much more...

Software is available for download from the LSC website and various software licences can be purchased. A single DMX512 output node (**QX1**) and a 2 x Isolated DMX512 output (**QX2**) USB to DMX converter box are available to enable a basic PC system set-up.

Two Programming and Playback Wings are available to add-on to your PC or Mac control system. Each Wing has the USB-DMX converters built in and connect to your laptop/computer via a USB cable. The **VX10** Playback Wing has 99 pages of ten LCD labelled masters with two isolated DMX512 outputs and the **VX20** Programming/Playback Wing has 99 pages of two sets of ten LCD labelled masters with 4 Isolated DMX512 outputs, plus a trackball and special buttons for more advanced control.

Many system configurations can be created using the basic building blocks of wings, nodes and software licences. Entry level systems can start as a **CT/1** licence plus a **QX1** node and expand to create a 8 DMX Universe system using two **VX20** wings, one **VX10** wing and two **CT/4** licences. The combinations are endless due to the flexibility of using many software licences and wings in the one system to increase the output and playback capacity.

**LSC Clarity** is designed for all—pro-user to novice, touring show to theatrical, conventional lighting to advanced Media control—all at a price point that is truly affordable!

VX20



VX10



QX2



QX1

## CODE DESCRIPTION

### CLARITY Lighting Control Software

CT/QX	Software suite for 128 channels + QX1 DMX Node
CT/1	Software Suite with dongle for 512 DMX channels
CT/2	Software Suite with dongle for 1,024 DMX channels
CT/4	Software Suite with dongle for 2,048 DMX channels
CT/16	Software Suite with dongle for 8,192 DMX channels
CT/U	Software Suite with dongle for 65,535, DMX channels

## CODE DESCRIPTION

### CLARITY Wings

VX10	Playback Wing - 10 Playbacks + 2 x DMX connectors
VX20	Playback Wing - 20 Playbacks, Programmer + 4 x DMX connectors

## CODE DESCRIPTION

### CLARITY Nodes

QX1	USB - DMX Node - 1 DMX connector, RDM enabled
QX2	USB - DMX Node - 2 DMX connectors, RDM enabled







## MANTRA<sup>LITE</sup>

**The Mantra is simple**  
– making control of LED fixtures easy and intuitive, whilst still allowing control of moving lights and conventional dimmers.

## Control Desks

**Mantra Lite** combines the ease of use of a fader based console, with the power of a touch screen graphical user interface.

The software shows the user what to do next, ensuring a very easy learning curve for even the novice user.

Power users are also catered for with many advanced features and the ability to record up to 100 memories, and playback 10 simultaneously. Each memory can be a cue or a cuelist/chase containing up to 250 individual cues, with a maximum of 1,000 cues in the console.

The **Mantra Lite** controls 24 individual fixtures, each with a physical fader for intensity. All other parameters are controlled via the large 18cm (8") colour capacitive touch screen, using a powerful graphical user interface, similar in operation to modern smartphones, giving the user the feeling of familiarity and comfort.

RGBW and CMY parameters are all controlled via a simple colour picker, Pan and Tilt via a virtual touchpad and other parameters by touchscreen faders. This allows the Mantra to control not just colour, but all the parameters of modern moving lights.

The unique Animate feature provides a simple and intuitive way to quickly create chases and patterns in a single cue – usually within just a few seconds. This feature alone makes the **Mantra Lite** the most powerful in its class. An Undo command system, context sensitive Help, and Live time controls ensures that Mantra will remain the market leader for years to come.

Fixture library updates and new software features are easily installed via USB stick and show files can be backed up to USB stick for off site storage.

Of course the **Mantra Lite** is RDM ready, to ensure that it meets your needs today and for the future.

An expansion wing will be available in Q3 2016 to expand the fixture count of the **Mantra Lite** console. The wing will have 12 additional fixture faders, 10 additional fixed playback faders, and an independent DMX512-A output—providing a total of 1,024 DMX slots. A maximum of 2 wings will be able to be used with a single console, providing a total of 48 fixtures, 30



MANTRA LITE



MANTRA LITE REAR PANEL

CODE	DESCRIPTION
	<b>MANTRA LITE LIGHTING CONSOLE</b>
MANTRA/LT	<b>Mantra Lite</b> 24 fixtures, 10 playbacks, 18cm touchscreen. 1 x DMX512-A output, Ethernet and 2 x USB.
MANTRA/WNG	<b>Mantra Lite</b> expansion wing. 12 additional fixtures, 2nd DMX512-A output.
	<b>OPTIONS</b>
MANTRA/LTDC	<b>MantraLite</b> dust cover with screened logo



# maXim



MAX/LP



MAX/MP



MAX/S



MAX/M



The PaTPad



Undoubtedly, one of the most powerful consoles in its class, the **maXim** range provides fantastic flexibility, programming ease and a large selection of features, normally found in consoles more than twice the price.

Stand alone memory/manual fader based operation or when coupled with the innovative **PaTPad** moving light controller, the **maXim** can provide a size and style that would suit the most discerning user.

The Moving Light (**PaTPad**) control provides up to six simultaneous parameters at your fingertips, allowing rapid programming of advanced functions such as fans, effects generator, groups, presets, palettes and filters. Utilising the large memory storage capacity of the **maXim**, recording and replaying large complex effects and looks is a breeze.

The **maXim** has developed an enviable reputation for being one of the best "busking" consoles on the market for intelligent lighting.

The range starts from a very compact 24 fader model and extends up to a useful 120 channel fader model with 378 submasters.

CODE	DESCRIPTION
<b>MAXIM LIGHTING CONSOLE RANGE</b>	
MAX/S	<b>maXim</b> - S 24 faders, 512 DMX channel console
MAX/SV	<b>maXim</b> - S 24 faders, 512 DMX channel console with video and disk
MAX/M	<b>maXim</b> - M 48 faders, 512 DMX channel console
MAX/MV	<b>maXim</b> - M 48 faders, 512 DMX channel console with video and disk
MAX/MP	<b>maXim</b> - M P 48 faders, 512 DMX channel console with <b>PaTPad</b> unit
MAX/L	<b>maXim</b> - L 72 faders, 1024 DMX channel console
MAX/LP	<b>maXim</b> - L 72 faders, 1024 DMX channel console with <b>PaTPad</b> unit
MAX/XL	<b>maXim</b> - XL 96 faders, 1024 DMX channel console
MAX/XLP	<b>maXim</b> - XL 96 faders, 1024 DMX channel console with <b>PaTPad</b> unit
MAX/XXL	<b>maXim</b> - XXL 120 faders, 1024 DMX channel console
MAX/XXLP	<b>maXim</b> - XXL 120 faders, 1024 DMX channel console with <b>PaTPad</b> unit

## OPTIONS

MAX/USB	SVGA, MIDI and USB output module for <b>MAX/S</b> and <b>MAX/M</b> consoles
MAX/P	<b>maXim PaTPad</b> Moving Light unit (not available for <b>MAX/S</b> and <b>MAX/M</b> )
MAXLITE	15" Gooseneck Console light for LSC control desks
MAX/SDC	<b>maXim</b> - S/SV dust cover with screened logo
MAX/MDC	<b>maXim</b> - M/MV dust cover with screened logo
MAX/MPDC	<b>maXim</b> - MP dust cover with screened logo
MAX/LDC	<b>maXim</b> - L/LP dust cover with screened logo
MAX/XLDC	<b>maXim</b> - XL/XLP dust cover with screened logo
MAX/XXLDC	<b>maXim</b> - XXL/XXLP dust cover with screened logo



# MINIM

Attractively styled and utilising the popular LSC programming and playback system, the **MINIM** delivers a very easy to use platform with quick access buttons to all major functions—no menu driven systems here!!

Available with 24 faders, 36 memories on 3 pages of 12 playbacks, external memory option, chase and crossfade control and an internal power supply, make the **MINIM** an ideal console for schools, churches, rental and AV companies, in fact, anywhere fast easy to program lighting shows are required.

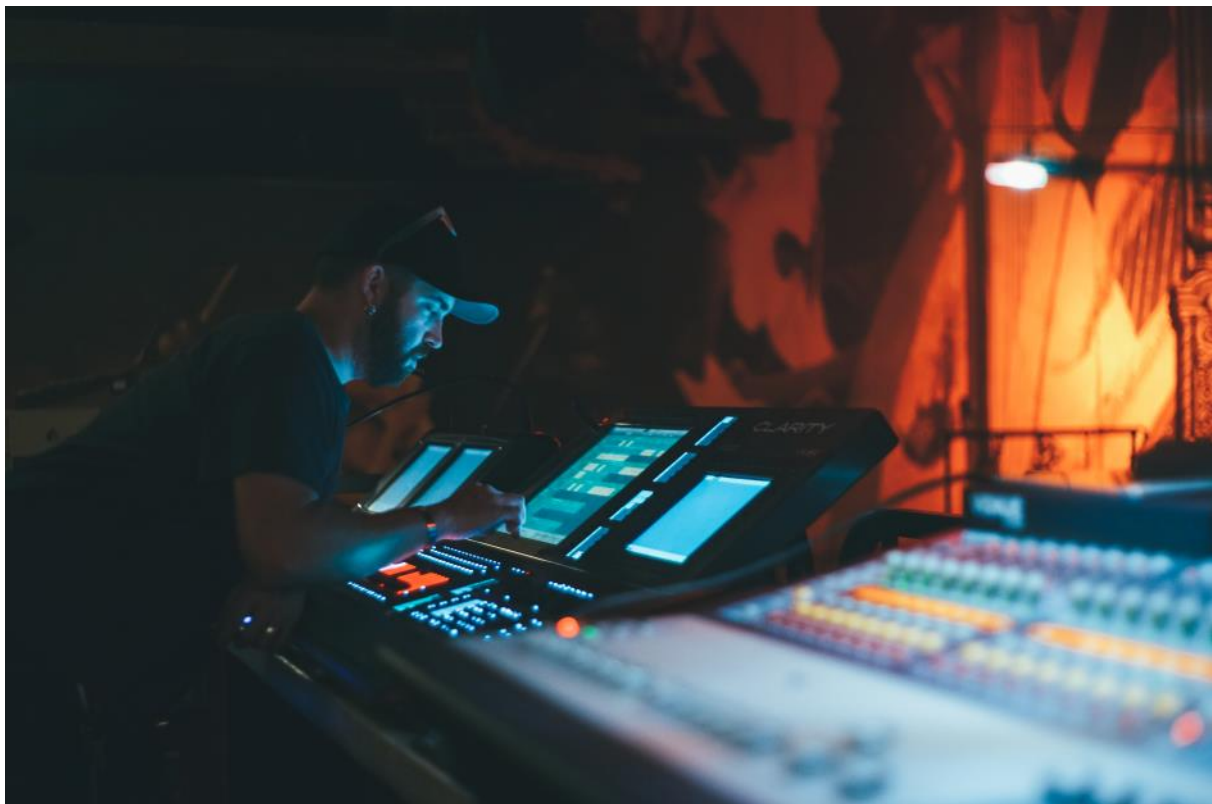


MINIM REAR PANEL

CODE	DESCRIPTION
	<b>MINIM LIGHTING CONSOLE</b>
MINIM	<b>MINIM</b> 24 faders, 36 memory DMX channel console
	<b>OPTIONS</b>
MINIM/RE	<b>MINIM</b> 19" rack mount kit
MINIM/ME	<b>MINIM</b> external memory module
MINIM/DC	<b>MINIM</b> dust cover with screened logo



MINIM/DC





# nexus

## Ethernet DMX converters

The NEXUS range is the latest addition to LSC's Data Distribution products and offers conversion between DMX512 signals and Ethernet, using both the Art-Net and Streaming ACN (sACN) protocols. The new v2 software also provides RDM over Art-Net to increase the benefit of using a Nexus in your rig.

Much more than your standard converter, the NEXUS range of both 1 and 5 port interfaces allows the user many other options such as a protocol conversion tool for today's demanding shows.

Using the free NexLan software, any NEXUS DMX port can be configured to operate in a number of modes such as:

- Standard DMX512 output from a selected Art-Net or sACN Universe
- A powerful RDM controller (or connect to 3rd party ArtNet/RDM software including the popular Supanova from LumenRadio)
- HTP merge of three selected Art-Net or sACN Universes.
- Select three universes and merge individual slots using HTP or Priority. Full Soft-patching is also possible.
- Assigned to a Primary and a Secondary Universe. Nexus auto-switches from Primary to Secondary on loss of the Primary Universe.
- Resend - any merged port can be resent as a new Art-Net or sACN Universe.
- DMX input - send a standard DMX port to an Art-Net or sACN Universe.
- DMX Backup - a normal input that is only sent if the selected Universe is not present.

This flexibility of configuration permits some very useful functionality such as:

- a simple Art-Net /sACN to DMX512 converter.
- a Back-up switch for multiple Lighting Controllers.
- a DMX512 to Art-Net /sACN converter.
- a DMX512 Splitter.
- a DMX512 Backup.



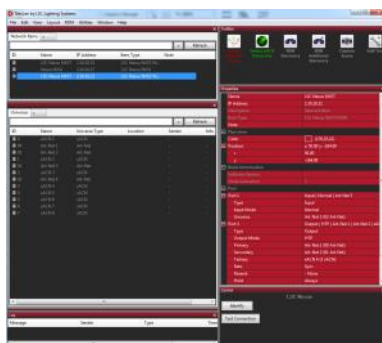
NXST



NXS1



NXSR



NexLAN v2 software for PC/Mac

CODE	DESCRIPTION
	<b>ETHERNET TO DMX I/O CONVERTER</b>
NXS1	<b>Nexus</b> portable PoE - 1 port DMX/ethernet converter
NXST	<b>Nexus</b> Truss mount - 5 port DMX/ethernet converter
NXST/P	<b>Nexus</b> Truss mount - 5 port Ethernet/DMX convertor with Powercon input.
NXSR	<b>Nexus</b> 1RU, 19" rack mount - 5 port DMX/ethernet converter
NXSR/P	<b>Nexus</b> 1RU 19" Rack mount - 5 port DMX/Ethernet converter with Powercon input.
	<b>Software</b>
NXSS	NexLAN v2 Windows and Mac Configuration software for Nexus units



# DMX/RDM Splitters

**MDR**  
**WDB**



The **MDR** range of DMX512-A based splitters are the only DMX splitters in the world that can be upgraded to full RDM (Remote Device Management) functionality after they are purchased. A simple plug-in daughter board provides all the intelligence and can be installed in just a few minutes.

Every output is fully earth isolated—to provide the maximum protection from earth loops and data corruption.

Now that RDM is gaining popularity, the **MDR** can be supplied with an RDM module now or purchased as an upgrade at a later stage.

The **MDR** range is *future-proofed* - buy what you need now and upgrade when you actually need the functionality.



**MDRJ**

CODE	DESCRIPTION
------	-------------

## DMX512 SPLITTER RANGE

### Base Models

MDRT	<b>MDR</b> DMX Splitter, 5-way Truss Mount with 5-pin XLR input and output connectors
MDRR	<b>MDR</b> DMX Splitter, 5-way 19" Rack Mount with 5-pin XLR input and output connectors
MDRX	<b>MDR</b> DMX Splitter, 10-way 19" Rack Mount with 5-pin XLR input and output connectors
MDRJ	<b>MDR</b> DMX Splitter, 10-way 19" Rack Mount with RJ45 Ethernet input and output connectors

### Factory Fitted Options

/R	Plug-in <b>RDM</b> module - suitable for all models.
/P	<b>Powercon</b> input connector in lieu of standard IEX connector
/1 to 10	Choose a number between 1 and 10 to determine how many outputs will be 3-pin XLR
/N	3-pin XLR input and thru connectors fitted in lieu of standard 5-pins

### Optional Upgrade Kits

MDR/RDM	<b>MDR</b> Splitter RDM upgrade kit - available for all models
MDR/BKT	<b>MDRT</b> Truss Mount Splitter Hook clamp adaptor bracket - Hook clamp not included.



**MDRT/R**



**MDRX/R**



**MDR/RDM**  
plug-in RDM module





Lighting Design Rohan Thornton



## The smarter way to design and install your Ethernet & DMX backbone

The NEW Distributed Network Architecture products allow for easy installation of DMX infrastructure using low cost Cat 5e/6 STP cable, standard RJ45 connectors (no soldering) and 'home run' cable topography - making it much easier for electrical contractors to install a robust DMX network.

The clever design allows for 1 or 2 universes of DMX to be carried over a single piece of STP (Shielded Twisted Pair) Cat5/6 and terminated using standard RJ45 connectors. For simplicity the PCBs are sold in matching pairs, one for each end of the cable. There is also an Ethercon to RJ45 option where two PCBs are provided to offer ruggedized Ethernet connections where required.

The DNA range use genuine **Neutrik Series A** connectors, for the highest reliability combined with the smallest possible footprint.

Custom solutions with different connector combinations are available for larger projects.



DNA/RP—19" Rack mount (with assorted DNA/D2, DNA/E1 & DNA/D1 installed)

CODE	DESCRIPTION
<b>Wall Plate Options</b>	
DNA/WP1	Wall plate with 1 off hole for connector, with standard back box
DNA/WP2	Wall plate with 2 off hole for connectors, with standard back box
DNA/WP4	Wall plate with 4 off hole for connectors, with standard back box
DNA/RP1	19" 1RU patch panel. Customise with the part codes below as required
<b>Connectors Options</b>	
DNA/E1	2pieces of Ethercon to RJ45 connector PCB mounted
DNA/D1	1 off 5Pin Male XLR to RJ45 PCB & 1 off 5Pin Female XLR to RJ45 PCB
DNA/D2	2 off 5Pin Male XLR to RJ45 PCB & 2 off 5Pin Female XLR to RJ45 PCB
DNA/D11	1 off 5Pin Male XLR + 1 off 5pin Female XLR to RJ45 PCB & 1 off 5Pin Female XLR + 1 off 5Pin Male XLR to RJ45 PCB



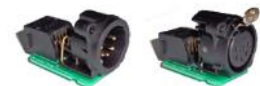
DNA/WP1



DNA/WP4



DNA/E1



DNA/D1



DNA/D2

# ISO Series



ISPR

A series of smart self-contained wall mount boxes for the isolation and distribution of DMX512 signals safely and conveniently around a venue.

**ISOports** are galvanically isolated and buffered outputs that can be configured up to 3 Universes (1536 channels) of DMX512 output per box.

**ISONodes** are intelligent inlets that can detect activity on its input and automatically switch the downstream DMX512 to its input, whilst totally isolating the upstream data.

**ISOpowers** provide fully protected 24VDC to **ISOports** and **ISONodes** modules.

CODE	DESCRIPTION
<b>ISO SERIES FOR DMX ISOLATION AND DISTRIBUTION</b>	
ISO1	Single optically isolated and buffered DMX512 outlet in wall mount box
ISO2	2 way optically isolated and buffered DMX512 outlet in wall mount box
ISO3	3 way optically isolated and buffered DMX512 outlet in wall mount box
ISON	Intelligent DMX512 inlet in wall mount box
ISPW	<b>ISOPOWER</b> - mini wall mount power supply unit (up to 12 units)
ISPR	<b>ISOPOWER</b> - 19" rack mount power supply, (up to 32 units)



ISON



ISO1



ISO3



# EKO

## DIMMING SYSTEM

The **EKO** family of products delivers a unique approach to multi-tasking for today's modern venues. Traditionally larger venues have specified modular cabinet based dimmer systems, to provide the flexibility to change modules between dimming and relay, as well as increase the perceived reliability of the system.



TCN9—Sydney

The LSC **EKO** system changes the rules, providing unrivalled reliability and flexibility whilst dramatically decreasing the cost of large scale installations. The unique **PTFD** dimming circuitry and use of high speed MCB's ensures that even the connection of a short circuited load will not damage the dimmer circuitry, whilst the inclusion of the **TruPower** option allows every channel to be configured to either dim or provide clean 240v power via a switching relay.

This not only makes the system flexible but future proof. Today the rig can be all incandescent fixtures, ELV or Neon and dimmed in a traditional manner. Tomorrow you can set the rig to be a combination of conventional and direct power and fly LED fixtures and/or moving lights safe in the knowledge that these fixtures are seeing the same power as if you plugged them into a normal power outlet.

Included with the **TruPower** option is **Circuit Breaker Detection** that allows the remote monitoring of each channels' MCB status. Under fault conditions (MCB tripped) an alarm is raised via an alert on the front panel UI, and is reported back to LSC's **Houston** remote dimmer monitoring software or via RDM.



ABC TV —Adelaide

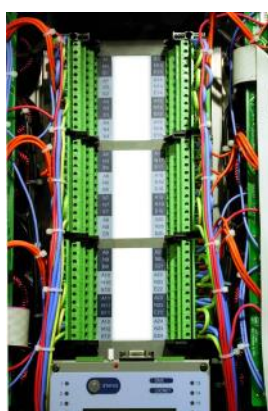
The innovative design of the **EKO** also provides a separate Installation Frame that can be supplied months ahead of the dimmer for pre-installation. This ensures less damage, as well as providing the installer better cash-flow during the project.

Blending traditional DMX512 with remote push button control, the **EKO** is available in many configurations based on 12 or 24 channels. If you need RCD protection, EKO offers two alternatives of either RCD per 12 channel bank or RCD per channel.

Control of the **EKO** can be from DMX512 or **LNET** for the connection of remote **ePLATE** wall plate controllers, **Houston** Remote Status Monitoring software or integration to A/V equipment or Building Management Systems.



Installation frames installed



Installation frame wired and dimmer connected



144 channels of EKO installed (Mackay Entertainment Centre)



## Professional Dimming installed in venues throughout the world!

CODE	DESCRIPTION
<b>Professional Installation Dimming and Power distribution Systems with LNET Networking</b>	
EKO312	<b>EKO - 12 ch. x 10A</b> fixed installation dimmer, DMX input, LNET enabled three phase input via 16mm <sup>2</sup> screw terminals
EKO324	<b>EKO - 24 ch. x 10A</b> fixed installation dimmer, DMX input, LNET enabled three phase input via 35mm <sup>2</sup> screw terminals
EKO606	<b>EKO - 6 ch. x 25A</b> fixed installation dimmer, DMX input, LNET enabled three phase input via 16mm <sup>2</sup> screw terminals
EKO612	<b>EKO - 12 ch. x 25A</b> fixed installation dimmer, DMX input, LNET enabled three phase input via 35mm <sup>2</sup> screw terminals
<b>EKO - RCD per channel</b>	
EKO***/B	As above plus individual RCBO (RCD + MCB) per channel protection
<b>EKO - Switch Racks</b>	
EKO***/C	<b>EKO Switch</b> - fixed installation <b>relay rack</b> , DMX input, LNET enabled, three phase input via 35mm <sup>2</sup> screw terminals
EKO***/C/R	<b>EKO Switch</b> - fixed installation <b>relay rack</b> , DMX input, LNET enabled, three phase input via 35mm <sup>2</sup> screw terminals. <b>Single RCD on input</b>
EKO***/B/C	<b>EKO Switch</b> - fixed installation <b>relay rack</b> , DMX input, LNET enabled, three phase input via 35mm <sup>2</sup> screw terminals. <b>RCBO (RCD + MCB) per channel</b>
<b>EKO - TRUpower Racks</b>	
EKO***/M	<b>EKO TruPower</b> - fixed installation dimmer, <b>TruPower</b> , Circuit Breaker Detect, DMX input, LNET enabled, three phase input via screw terminals
EKO***/M/R	<b>EKO TruPower</b> - fixed installation dimmer, <b>TruPower</b> , Circuit Breaker Detect, DMX input, LNET enabled, <b>Single RCD</b> protection, three phase input via screw terminals
EKO***/M/B	<b>EKO TruPower</b> - fixed installation dimmer, <b>TruPower</b> , Circuit Breaker Detect, DMX input, LNET enabled, <b>RCBO (RCD + MCB) per channel</b> protection, three phase input via screw terminals
EKO***	<b>For the above models please indicate the channel requirement for the correct part code:</b>
	<b>EKO312 = 12 x 10A</b>
	<b>EKO324 = 24 x 10A</b>
	<b>EKO606 = 6 x 25A</b>
	<b>EKO612 = 12 x 25A</b>



EKO324/R



EKO312  
Installation Frame



The Arts Centre Gold Coast—QLD



# TEKO

## Professional Networking Dimmer



TEKO3/A

The **TEKOv3** takes the robustness, feature set and user friendliness of the LSC dimmer range to the next level. Equipped with a large format touch screen LCD, the **TEKOv3** range provides many more benefits, such as: networking capabilities via LSC's **LNET** products; 80 memory scene storage; fault feedback with log; full 512 softpatch; large status indicators; remote control from LSC's **ePLATE controllers** or remote network monitoring with LSC's **HOUSTON** software.

The **TEKOv3** is supplied standard with individual RCBO per channel, for highest level of user and equipment protection, **TruPower** which also includes **Circuit Breaker Monitoring** on every channel. **TruPower** allows each channel to be locally or remotely selected as a PTFD dimmer or as DMX512 controlled power switch. **TruPower** by-passes the dimmer electronics thus providing "clean" power to high powered discharge lamps or moving lights. **Circuit Breaker Monitoring** allows an operator to remotely check the status for the dimmer MCB's and report back to LSC's **HOUSTON** software or via RDM.

Available in 12 x 10A and 6 x 25A channel configurations, with either GPO sockets or hardwired terminals, there is a package size, output capacity and top level functionality to suit most applications.

CODE	DESCRIPTION
	<b>TEKO 12 channel x 10A</b>
TKO12/10A	<b>TEKO RCBO TRUpower</b> - 12 ch. x 10A RCD+MCB protection per channel, Trupower, Circuit Breaker Detect, 12 x 10A <b>GPO outlets</b> , three phase tail and plug fitted.
TKO12/10/H/A	<b>TEKO RCBO TRUpower</b> - 12 ch. x 10A RCD+MCB protection per channel, Trupower, Circuit Breaker Detect, 12 x 10A <b>GPO outlets</b> , three phase tail and plug fitted. <b>High RiseTime Inductors</b>
TKO12/10T	<b>TEKO RCBO TRUpower</b> - 12 ch. x 10A RCD+MCB protection per channel, Trupower, Circuit Breaker Detect, <b>Screw terminals</b> for input power and output load circuits.
TKO12/10T	<b>TEKO RCBO TRUpower</b> - 12 ch. x 10A RCD+MCB protection per channel, Trupower, Circuit Breaker Detect, <b>Screw terminals</b> for input power and output load circuits. <b>High RiseTime Inductors</b>
	<b>TEKO 6 channel x 25A</b>
TKO6/25A	<b>TEKO RCBO TRUpower</b> - 6 ch. x 25A RCD+MCB protection per channel, LCD touchscreen with LNET, Trupower, Circuit Breaker Detect, Australian <b>20A/15A</b> paired outlets, three phase tail fitted. <b>High RiseTime Inductors</b>
TKO6/25/H/A	<b>TEKO RCBO TRUpower</b> - 6 ch. x 25A RCD+MCB protection per channel, LCD touchscreen with LNET, Trupower, Circuit Breaker Detect, Australian <b>20A/15A</b> paired outlets, three phase tail fitted. <b>High RiseTime Inductors</b>
TKO6/25T	<b>TEKO 25A RCBO TRUpower</b> - 6 ch. x 25A RCD+MCB protection per channel, LCD touchscreen with LNET, Trupower, Circuit Breaker Detect, <b>Screw terminals</b> for input power and output load circuits.
TKO6/25/H/T	<b>TEKO 25A RCBO TRUpower</b> - 6 ch. x 25A RCD+MCB protection per channel, LCD touchscreen with LNET, Trupower, Circuit Breaker Detect, <b>Screw terminals</b> for input power and output load circuits. <b>High RiseTime Inductors</b>
	<b>Options</b>
ROO/BRKT	Adaptor brackets to suit RooBar frames



TWM12/10A

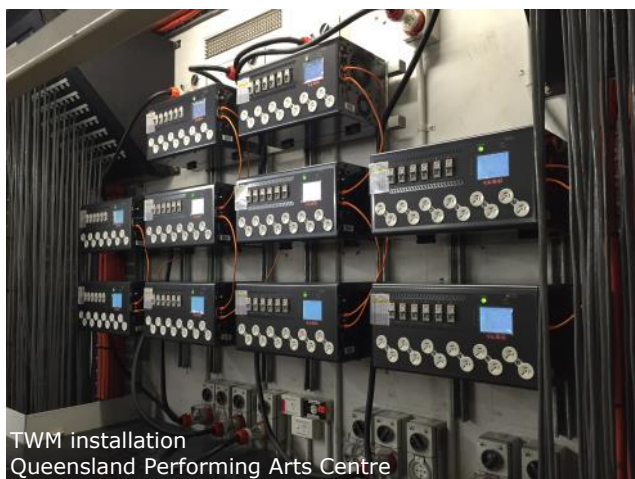
# TEKO

## Wallmount

The **TWM** (TEKO Wall Mount) utilises the well proven EKO electronics and houses it in a smaller footprint chassis with the option of front mounted sockets, to enable it to be used with existing patch panel systems, or internal hardwired terminals.

The **TWM** utilises a unique two-part body, where the rear casing can be removed and mounted to the wall prior to the main body being attached. This system makes installation easier and safer, as the rear section weighs less than 5kg, making it manageable by one person. It is also very popular with the installing electricians, as all the hardwired terminals are on this rear panel, allowing all terminations to be done without the bulky dimmer body getting in the way. Once the chassis is securely fastened to the wall and all the electrical work done, the main body can be slid onto the hinges and secured in place, again by a single person. When attached, the front body can swing open to allow access for servicing and cable testing.

For venues that require semi-portability, LSC offers a hanging bracket that is designed to sit over Uni-Strut, allowing a rack to be hung/removed in only a few seconds. In this situation the **TWM** is fitted with the optional 3-phase tail and plug, to allow it to connect to a standard 3-phase wall outlet.



TWM installation  
Queensland Performing Arts Centre

To avoid accidental damage all the data connections are located on the right side of the unit, which also aids with good cable management and separation of mains and data.

The **TWM** provides all the legendary reliability of the EKO/TEKO range, along with all the popular features including **TruPower**, **LNET**, **RCBO** per channel, **Circuit Breaker Monitoring** and remote reporting via **Houston** and **RDM**.

The **TWM** is an indent order product and minimum order quantities apply.

CODE	DESCRIPTION
	<b>TWM 12 channel x 10A</b>
TWM12/10A	<b>TWM</b> - 12 ch. x 10A RCBO, 12 x 10A <b>GPO outlets</b> , internal hard wired terminals for mains input. Includes LNET and TRUpower as standard.
TWM12/10T	<b>TWM</b> - 12 ch. x 10A RCBO, <b>internal hard wired terminals for load circuits</b> and mains input. Includes LNET and TRUpower as standard.
TWM12/10/H/A	<b>TWM</b> - 12 ch. x 10A RCBO, 12 x 10A <b>GPO outlets</b> , internal hard wired terminals for mains input. Includes LNET and TRUpower as standard. <b>High RiseTime inductors</b>
TWM12/10/H/T	<b>TWM</b> - 12 ch. x 10A RCBO, <b>internal hard wired terminals for load circuits</b> and mains input. Includes LNET and TRUpower as standard. <b>High RiseTime inductors</b> .
	<b>TWM 6 channel x 25A</b>
TWM6/25A	<b>TWM</b> - 6 ch. x 25A RCBO, Australian <b>20A/15A</b> paired outlets, internal hard wired terminals for mains input. Includes LNET and TRUpower as standard.
TWM6/25T	<b>TWM</b> - 6 ch. x 25A RCBO, <b>internal hard wired terminals for load circuits</b> and mains input. Includes LNET and TRUpower as standard.
TWM6/25/H/A	<b>TWM</b> - 6 ch. x 25A RCBO, Australian <b>20A/15A</b> paired outlets, internal hard wired terminals for mains input. Includes LNET and TRUpower as standard. <b>High RiseTime inductors</b>
TWM6/25/H/T	<b>TWM</b> - 6 ch. x 25A RCBO, <b>internal hard wired terminals for load circuits</b> and mains input. Includes LNET and TRUpower as standard. <b>High RiseTime inductors</b> .
	<b>Options</b>
BRKT/UNIS	Pair of galvanised hanging brackets to suit Uni-Strut P-1000
TAIL40A/S1	Optional three phase flying lead (1m) fitted with 40A plug and mounting gland
TAIL40A/S2	Optional three phase flying lead (2m) fitted with 40A plug and mounting gland



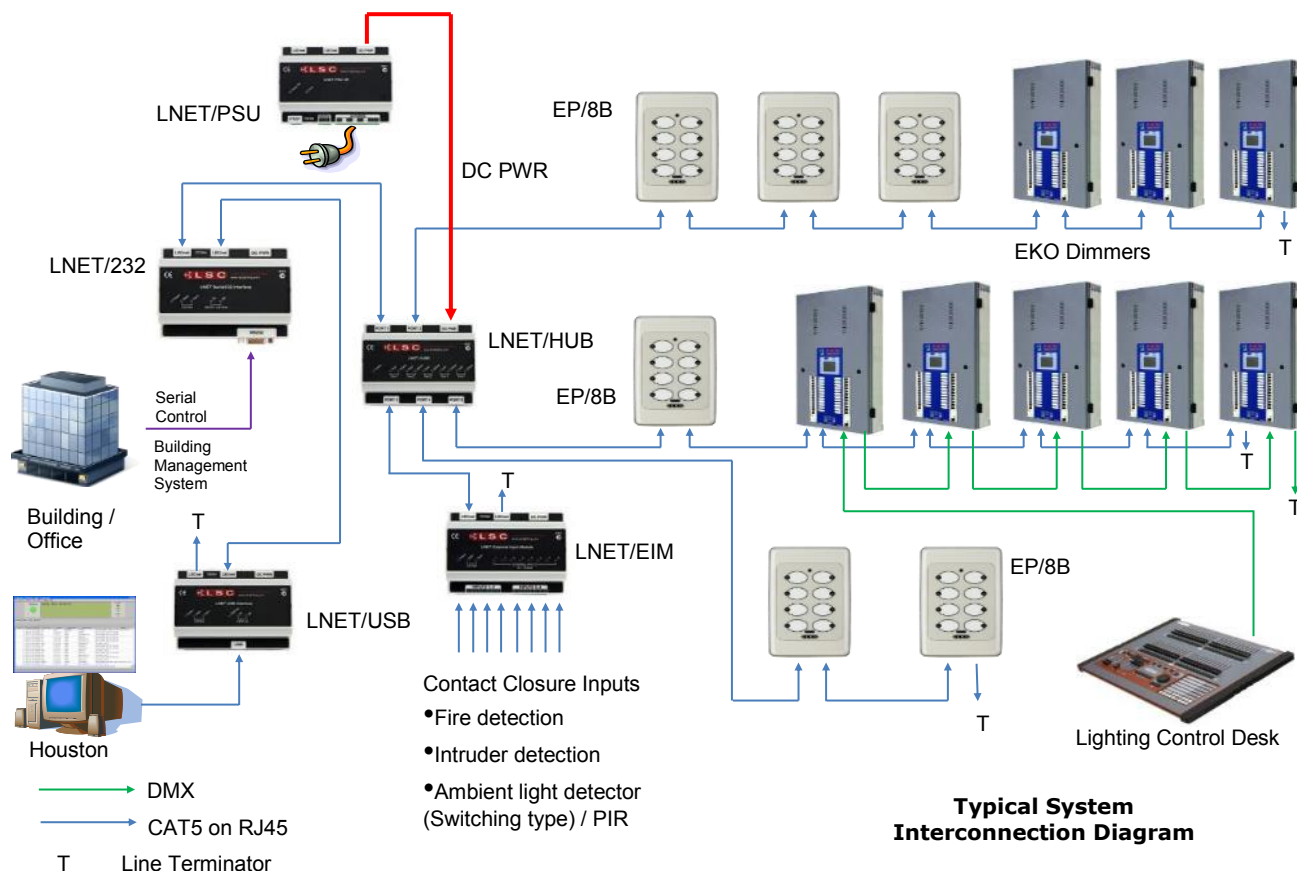


# LNET



**LNET** is the backbone communication link for many LSC products. It allows high speed, real time data to be transferred over distances up to 800m using simple Cat5 cable.

The data is used to remotely control, monitor and configure **LNET** equipped devices — **EKO**, **TEKO**, **E24v3**, **HOUSTON**, **ePLATE**, **ToolBox** and the new DIN rail mount products detailed below.



**Typical System Interconnection Diagram**



**LNET/USB**



**LNET/HUB**

CODE	DESCRIPTION
<b>LNET Protocol Converters</b>	
LNET/232	LNET to RS232 bi-directional interface. Allows connection of Lnet enabled devices to 3rd party control systems (eg. Crestron, Pharos, AMX, Stardraw Control, etc)
LNET/EIM	LNET General Purpose Input module. Provides 8 GPI inputs (voltage free contact closure) for interfacing LNETto BMS or relay controls
LNET/HUB	LNET 5 port hub. Allows connection of Lnet devices in a star topology wiring configuration. Includes auto-termination to allow Lnet outlet sockets to be used for connection of portable Lnet devices
LNET/USB	LNET to USB interface. This DIN rail mounted device provides a USB connection to the LNET network - required for use of LSC ToolBox and/or Houston software
LNET/PSU	LNET DINrail mount power supply for above items, as well as to provide additional power for ePlates in a standard system. LSC recommend using two units to provide full redundancy.

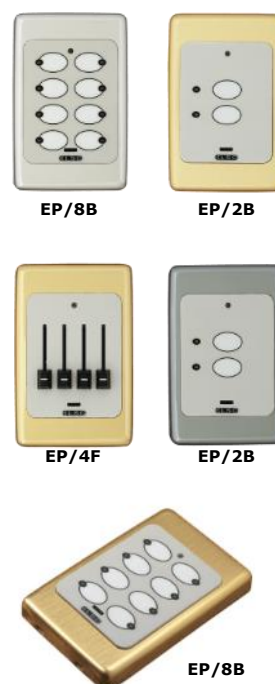


## LNET Remote Control Wall Plates

Smart, attractive wall stations for the remote control of **LNET** enabled products such as **EKO**, **TEKOV3** and **e24V3** dimmers. Users can recall internal memories in the dimmers for replay at a pre-programmed level and with a selected fade time.

Each **ePLATE** is supplied with a 35mm deep Surface Mounting Box and a plasterboard clip for flush mounting.

CODE	DESCRIPTION
	<b>Remote control wall stations for control of all LNET enabled products</b>
EP/8B	<b>ePlate</b> - 8 push buttons, user programmable
EP/4B	<b>ePlate</b> - 4 push buttons, user programmable
EP/2B	<b>ePlate</b> - 2 push buttons, user programmable
EP/4F	<b>ePlate</b> - 4 faders, user programmable
EP/2F	<b>ePlate</b> - 2 faders, user programmable
EP/1F	<b>ePlate</b> - 1 faders, user programmable
EP/4B/1F	<b>ePlate</b> - 4 push button plus 1 fader, user programmable
EP/4B/2F	<b>ePlate</b> - 4 push button plus 2 faders, user programmable
EP/2B/1F	<b>ePlate</b> - 2 push button plus 1 fader, user programmable
EP/2B/2F	<b>ePlate</b> - 2 push button plus 2 faders, user programmable
	<b>Other combinations on request</b>
	<i>The above ePlates come complete with a white surface mount back box 35mm depth and Plasterboard mounting clip (for flush mount finish) as standard</i>



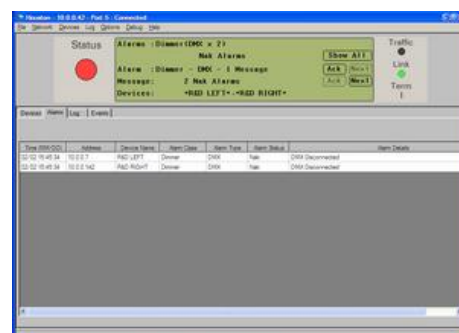
EPS/2000GD	<b>ePlate</b> - Gold Flush Surround, curved sides
EPS/2000CH	<b>ePlate</b> - Chrome Flush Surround, curved sides
EPS/2000GM	<b>ePlate</b> - Gun Metal Flush Surround, curved sides
EPS/2000BB	<b>ePlate</b> - Brushed Brass Flush Surround, curved sides
EPS/2000BA	<b>ePlate</b> - Brushed Aluminium Flush Surround, curved sides



**Houston** is a Windows based PC application that allows for remote monitoring of all **LNET** enabled products. Operational faults such as phase failure, loss of DMX, over temperature, etc., are sent over the network to one or more PCs running the software.

Venue operators and managers can then quickly view the nature of the fault, date/time occurred and location. Perfect for monitoring large scale venues and outdoor festival sites.

CODE	DESCRIPTION
HOUSTON	Windows PC real time Status Monitoring Software for LSCnet enabled products. Price includes LNET/EIM module.
HOUSTON/BR	Houston software with Dimmer configuration Back-up and Restore functionality. Price includes LNET/EIM module.





# GEN•VI

## Advanced Dimming System

### A new era in Power & Dimming Control



GEN12/10A

Just over 2 years ago LSC introduced a new intelligent dimming and power distribution unit, the **GenVI** Advanced Dimming System (pronounced "gen-vee"), in acknowledgement of the changing demands of the marketplace,

The **GenVI** represents the sixth generation of dimmers designed by LSC over its 35+ year history and is built on our extensive experience for today's complex lighting and power control.

Equally at home in the lighting, sound and video markets, for portable or permanent installation, the new **GenVI** Advanced Dimming System allows you to configure any of its outputs in any combination, to be an 8 bit or 16 bit dimmer or a direct power relay channel (**TruPower**). This enables **GenVI** to dim traditional lamps or power moving lights, LED fixtures, video screens or audio power amplifiers—in fact anything where controlled power distribution is needed.

The colour touchscreen offers the user the ability to set each channel individually, control the outputs locally and view any external fault conditions that may be present.

As well as having local and DMX control, **GenVI** is also RDM (Remote Device Management) enabled, allowing the user to change the DMX address of the unit, and view any fault conditions including over-temperature and loss of phase or DMX signal from any RDM controller.

Each circuit on the **GenVI** is protected by an RCBO (combination MCB + 30mA RCD) device and can be rated at either 10A or 25A.

Optional Neutral disconnect MCBs can be provided where RCDs are not desirable.

**GenVI** Advanced Dimmer System offers on-board memories for instant recall of scenes or chases, each of which can be individually programmed. Alternatively, a 'snapshot' of the DMX input from a lighting console can be stored and recalled either locally or as an emergency back up on loss of a DMX signal.

Examples of the GenVI touchscreen views:

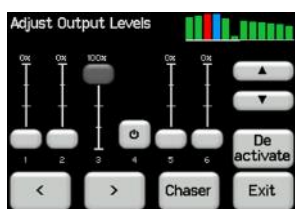


Fig 1. Local Control

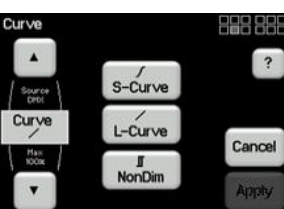


Fig 2. Channel setup

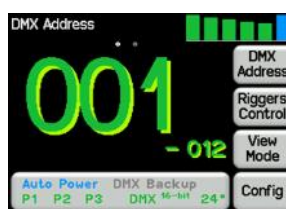


Fig 3. DMX Address



Fig 4. DMX Patch

CODE	DESCRIPTION
<b>GenVI - 12 channel x 10A</b>	
GEN12/10A	<b>GenVI 12ch x 10A</b> Power Distribution rack. 3RU 19" rack mount with individual RCD/MCB per outlet. 12 x Australian <b>10A</b> output connectors
GEN12/10T	<b>GenVI 12ch x 10A</b> Power Distribution rack. 3RU 19" rack mount with individual RCD/MCB per outlet. <b>Screw terminals</b> on rear panel for power and load connections.
GEN12/10W	<b>GenVI 12ch x 10A</b> Power Distribution rack. 3RU 19" rack mount with individual RCD/MCB per outlet. 2 x <b>Wieland</b> output connectors
GEN12/10X	<b>GenVI 12ch x 10A</b> Power Distribution rack. 3RU 19" rack mount with individual RCD/MCB per outlet. 2 x <b>Socapex</b> output connectors
<b>GenVI - 6 channel x 25A</b>	
GEN6/25A	<b>GenVI 6ch x 25A</b> Power Distribution rack. 3RU 19" rack mount with individual RCD/MCB per outlet. Australian <b>20A/15A</b> paired outlets.
GEN6/25T	<b>GenVI 6ch x 25A</b> Power Distribution rack. 3RU 19" rack mount with individual RCD/MCB per outlet. <b>Screw terminals</b> on rear panel for power and load connections.



LIGHTING SYSTEMS

## A new case for wallmount racks

# GEN•VI

## WALL MOUNT



GVW12/10A

of dimming/power distro can be installed in only 1.8m high x 1.7m wide of wall space. Most importantly, all the controls are at a comfortable work height and no patch leads are left dragging on the ground. Only LSC can offer such a workable solution in such a small area, eliminating the OH&S issues with alternative systems.

The **GVW** chassis is manufactured in two separate sections, to allow the rear box to be easily mounted to the wall, without the main electronics module. Once this chassis is mounted to the wall all the power/load terminations can be undertaken, with easy access to all terminals and no chance of accidental damage to the electronics by other trades. This also allows for easy cleaning and servicing of the installed product.



GVW12/10T chassis

Equally at home in the lighting, sound and video markets, the **GVW** Advanced Dimming System gives you complete control of dimming and power distribution in any installation. The **GVW** allows you to configure any of its outputs in any combination, to be an 8 bit or 16 bit dimmer or a direct power relay channel. This enables the **GVW** to dim traditional lamps, ELV and Neon or power moving lights & LED fixtures. It also retains all the other features of the GenVI, as outlined on the opposite page

The **GVW**, like all LSC products is Made in Australia and is covered by our industry leading 2 year parts and labour warranty



Dimming/Power

CODE	DESCRIPTION
	<b>GenVI Wallmount - 12 channel x 10A</b>
GVW12/10A	<b>GenVI Wallmount 12ch x 10A</b> Power Distribution rack. Wallmount chassis with individual RCD/MCB per outlet. 12 x Australian <b>10A</b> output connectors
GVW12/10T	<b>GenVI Wallmount 12ch x 10A</b> Power Distribution rack. Wallmount chassis with individual RCD/MCB per outlet. <b>Screw terminals</b> inside rear panel for power and load connections.
	<b>GenVI Wallmount - 6 channel x 25A</b>
GVW6/25A	<b>GenVI Wallmount 6ch x 25A</b> Power Distribution rack. Wallmount chassis with individual RCD/MCB per outlet. Australian <b>20A/15A</b> paired outlets.
GVW6/25T	<b>GenVI Wallmount 6ch x 25A</b> Power Distribution rack. Wallmount chassis with individual RCD/MCB per outlet. <b>Screw terminals</b> inside rear panel for power and load connections.
	<b>Options</b>
BRKT/UNIS	Pair of galvanised hanging brackets to suit Uni-Strut
TAIL40A/S1	Optional three phase flying lead (1m) fitted with 40A plug and mounting gland
TAIL40A/S2	Optional three phase flying lead (2m) fitted with 40A plug and mounting gland



BRKT/UNIS



# APS

## A new era in Power Distribution

Power Distribution is one of the most critical components of any lighting system. Yet most power distribution products on the market are little more than a bunch of circuit breakers and cabling in a box.

The new **Advanced Power System** is much more.

- Automatic power On/Off of circuits when DMX or contact closure (via GPI) is detected
- Combined **MCB and RCD per channel** protection (10A & 25A options)
- Staggered power up of outputs to prevent overloading of the supply feed (cascading of multiple units is also possible)
- Manual override via front panel
- Optional Powercon output panel

Suitable for use with

- Moving Lights & LED fixtures
- Video walls
- Audio Systems
- Stall power for Markets and Fairgrounds

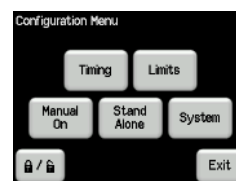
The **APS** racks are ideal for schools, churches, public halls and other venues where Energy Management is a key goal. By using APS modules to power all the lighting, audio and video components in a system, the installation can be fully automated. The APS can be configured to automatically and sequentially power up all the LED fixtures, video screens, audio amplifiers, moving lights and other mains powered equipment whenever the lighting console is powered on, or a single remote switch is turned on.

When the lighting console or the remote switch is turned off the APS will, after an adjustable delay time, turn off the power to all the devices to ensure that the entire system is powered down when not in use, and that standby energy consumption is minimised.

**APS**—taking power management into the future.



APS12/10A



Config Screen



Main Display

CODE	DESCRIPTION
<b>APS, 10A Advanced Power Distribution</b>	
APS12/10A	<b>APS</b> 12ch x <b>10A</b> Advanced Power Distribution rack. 3RU 19" rack mount with individual RCD/MCB per outlet. Australian <b>12 x 10A</b> outlets, three phase tail and plug fitted.
APS12/10T	<b>APS</b> 12ch x <b>10A</b> Advanced Power Distribution rack. 3RU 19" rack mount with individual RCD/MCB per outlet. <b>Screw terminals</b> on rear panel for power and load connections.
APS12/10P	<b>APS</b> 12ch x <b>10A</b> Advanced Power Distribution rack. 3RU 19" rack mount with individual RCD/MCB per outlet. <b>12 x Powercon</b> outlets, three phase tail and plug fitted.
APS12/10X	<b>APS</b> 12ch x <b>10A</b> Advanced Power Distribution rack. 3RU 19" rack mount with individual RCD/MCB per outlet. <b>2 x 19pin Socapex</b> connectors, three phase tail and plug fitted.
<b>APS, 25A Advanced Power Distribution</b>	
APS6/25A	<b>APS</b> 6ch x <b>25A</b> Advanced Power Distribution rack. 3RU 19" rack mount with individual RCD/MCB per outlet. Australian <b>20A/15A</b> paired outlets, three phase tail and plug fitted.
APS6/25T	<b>APS</b> 6ch x <b>25A</b> Advanced Power Distribution rack. 3RU 19" rack mount with individual RCD/MCB per outlet. <b>Screw terminals</b> on rear panel for power and load connections.
APS6/25P	<b>APS</b> 6ch x <b>25A</b> Advanced Power Distribution rack. 3RU 19" rack mount with individual RCD/MCB per outlet. <b>12 paired Powercon</b> outlets, three phase tail and plug fitted.



LIGHTING SYSTEMS

# APS

**Wallmount**



**APW 12/10A**



**APW Side View**

The **APW** is a wall mounted version of the APS smart power distro. It uses the proven wall mount chassis of the GVW and TWM dimmer racks, combined with the intelligence of the APS to provide the missing link in any dimmer & power distribution installation. Our specially designed Unistrut Brackets allows easy removal and repositioning of all of these products as they have exactly the same physical size and shape, allowing for easy dimmer room reconfiguration if your load requirements alter over time.

The **APW** is available in both a hardwired version, or with front mounted sockets to enable it to be used with existing patch panel systems.

The **APW** utilises a unique two-part body, where the rear casing can be removed and mounted to the wall prior to the main body being attached. This system makes installation easier and safer, as the rear section weighs less than 5kg, making it manageable by one person. It also very popular with the installing electricians, as all the hardwired terminals are on this rear panel, allowing all terminations to be done without the bulky dimmer body getting in the way. Once the chassis is securely fastened to the wall and all the electrical work done, the main body can be slid onto the hinges and secured in place, again by a single person. When attached, the front body can swing open to allow access for servicing and cable testing.

For venues that require semi-portability, LSC offers a hanging bracket that is designed to sit over Uni-Strut, allowing a rack to be hung/removed in only a few seconds. In this situation the **APW** can be fitted with the optional 3-phase tail and plug, to allow it connect to a standard 3-phase wall outlet.

To avoid accidental damage all the data connections are located on the side of the unit, which also aids with good cable management and separation of mains and data.

The features and application of the Wallmounted **APW** are identical to the rack mounted APS as shown on the opposite page.

CODE	DESCRIPTION
<b>APS, 10A Advanced Power Distribution</b>	
APW12/10A	<b>APS 12ch x 10A</b> Advanced Power Distribution rack. 3RU 19" rack mount with individual RCD/MCB per outlet. Australian <b>12 x 10A</b> outlets, internal screw terminals for power input.
APW12/10T	<b>APS 12ch x 10A</b> Advanced Power Distribution rack. 3RU 19" rack mount with individual RCD/MCB per outlet. <b>Screw terminals</b> on rear panel for power and load connections.
<b>APS, 25A Advanced Power Distribution</b>	
APW6/25A	<b>APS 6ch x 25A</b> Advanced Power Distribution rack. 3RU 19" rack mount with individual RCD/MCB per outlet. Australian <b>20A/15A</b> paired outlets, internal screw terminals for power input.
APW6/25T	<b>APS 6ch x 25A</b> Advanced Power Distribution rack. 3RU 19" rack mount with individual RCD/MCB per outlet. Internal <b>Screw terminals</b> for power and load connections.
<b>Options</b>	
BRKT/UNIS	Pair of galvanised hanging brackets to suit Uni-Strut
TAIL40A/S1	Optional three phase flying lead (1m) fitted with 40A plug and mounting gland
TAIL40A/S2	Optional three phase flying lead (2m) fitted with 40A plug and mounting gland



**BRKT/UNIS**





Lighting Design & Programming by  
Shock Solutions, UK  
International Broadcast Centre  
London 2012

# POWERPOINT

## POWER DISTRIBUTION SYSTEM

### Simple & Affordable Power Distribution

Designed for applications wherever fixed or mobile power distribution is required. The **PowerPoint** distribution rack offers the user a 4-pole mains input isolator switch with Neutral Disconnect as standard and individual RCBO (RCD+MCB) per output channel. There are also 3 neon phase indicators to show power input to the rack.

Circuit rating can be specified as either 10A or 25 Amps.

Back panel options include either Australian GPO, Socapex, Powercon or Terminal Outputs. PowerPoint also comes supplied with a 1.2 metre cable fitted with a 3-phase plug as standard.

Everything you need for reliable, affordable power distribution for your show!



PWP12/13X

Like all LSC products, the **PowerPoint** units are made in Australia, ensuring the highest possible quality of manufacture, yet the price is comparable to cut price imported units. The **PowerPoint** is covered by the industry leading LSC warranty, 2 full years covering parts and labour, to ensure complete peace of mind for your purchase.

The **PowerPoint** is ideal for powering audio systems, lighting rigs, LED walls, catering equipment and anything else that requires reliable power to be provided safely.



Australian GPO Outputs



Terminal Outputs



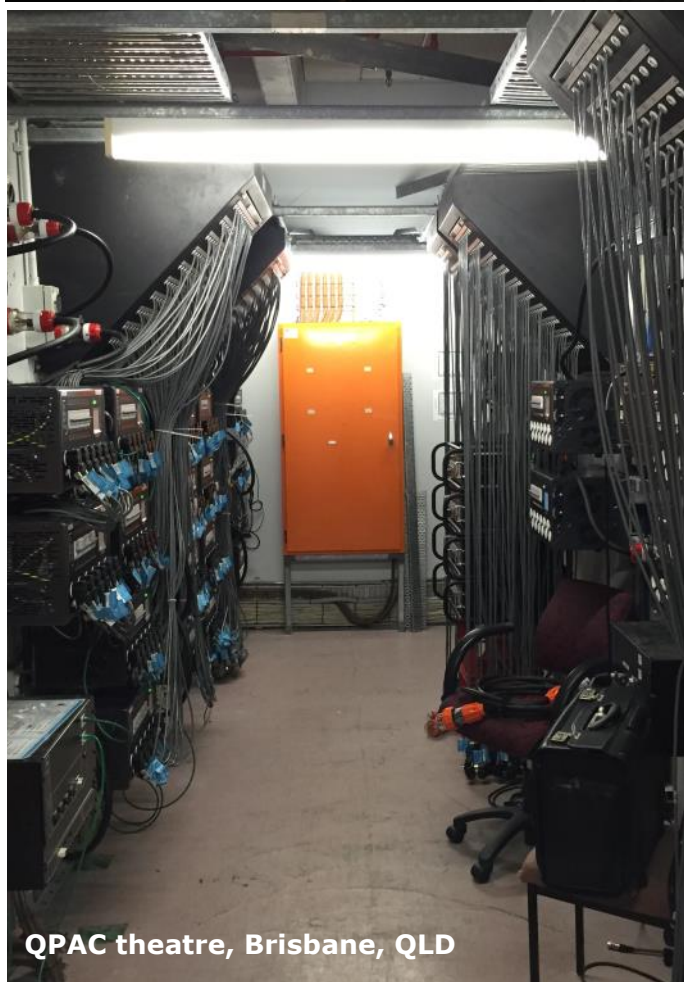
Socapex Outputs

CODE	DESCRIPTION
<b>PowerPoint, 10A Power Distribution Racks</b>	
PWP12/10A	<b>PowerPoint</b> 12ch x <b>10A</b> Power Distribution rack. Fitted with Australian <b>10A</b> output connectors
PWP12/10P	<b>PowerPoint</b> 12ch x <b>10A</b> Power Distribution rack. Fitted with <b>Powercon</b> output connectors
PWP12/10X	<b>PowerPoint</b> 12ch x <b>10A</b> Power Distribution rack. Fitted with <b>Socapex</b> output connectors
PWP12/10T	<b>PowerPoint</b> 12ch x <b>10A</b> Power Distribution rack. Fitted with <b>Screw Terminal</b> output connectors
<b>PowerPoint, 25A Power Distribution Racks</b>	
PWP6/25A	<b>PowerPoint</b> 6ch x <b>25A</b> Power Distribution rack. Fitted with Australian <b>20A/15A paired</b> output connectors
PWP6/25P	<b>PowerPoint</b> 6ch x <b>25A</b> Power Distribution rack. Fitted with <b>Powercon paired</b> output connectors
PWP6/25T	<b>PowerPoint</b> 6ch x <b>25A</b> Power Distribution rack. Fitted with <b>Screw Terminal</b> output connectors





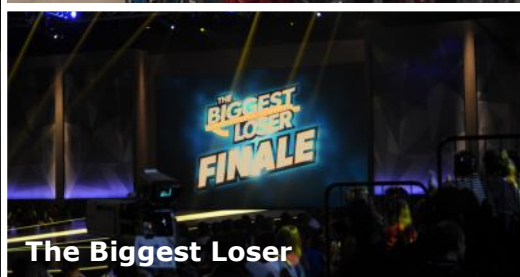
**The Biggest Loser, Straus Productions**



**QPAC theatre, Brisbane, QLD**



**QPAC theatre, Brisbane, QLD**



**The Biggest Loser**



LIGHTING SYSTEMS

# REDBACK



## Patch Bay

Since their release the **Redback Patch Bays** have become the de-facto industry standard due to their flexibility and ease of installation.

At LSC we believe that even the best product can be improved and the decision was made to increase the cable density, to fit more patch circuits into less space. The new 12way **RBP/A** is now only 1RU in height (previously 2RU) and that effectively halves the required wall space on any given installation.

Although originally designed to complement the **Redback Wallmount** series of installation dimmers, the Redback Patch Bays can be used for any installation where patching is required, including with the popular **GVW**, **APW** and **TWM** dimmers and power distribution units.

CODE	DESCRIPTION
RBP/12	Modular 12 way patchbay, expandable to 36 ccts.
RBP/12/T	Modular 12 way patchbay, expandable to 36 ccts, Fitted with Test Module.
RBP/24	Modular 24 way patchbay, expandable to 36 ccts.
RBP/24/T	Modular 24 way patchbay, expandable to 36 ccts. Fitted with Test Module.
RBP/36	Modular 36 way patchbay.
RBP/36/T	Modular 36 way patchbay. Fitted with Test Module.
RBP/48	Modular 48 way patchbay, expandable to 72 ccts
RBP/48/T	Modular 48 way patchbay, expandable to 72 ccts. Fitted with Test Module.
RBP/60	Modular 60 way patchbay, expandable to 72 ccts.
RBP/60/T	Modular 60 way patchbay, expandable to 72 ccts. Fitted with Test Module.
RBP/72	Modular 72 way patchbay.
RBP/72/T	Modular 72 way patchbay. Fitted with Test Module.
RBP/84	Modular 84 way patchbay, expandable to 144 ccts.
RBP/84/T	Modular 84 way patchbay, expandable to 144 ccts. Fitted with Test Module.
RBP/96	Modular 96 way patchbay, expandable to 144 ccts.
RBP/96/T	Modular 96 way patchbay, expandable to 144 ccts. Fitted with Test Module.
RBP/108	Modular 108 way patchbay, expandable to 144 ccts.
RBP/108/T	Modular 108 way patchbay, expandable to 144 ccts. Fitted with Test Module.
RBP/120	Modular 120 way patchbay, expandable to 144 ccts.
RBP/120/T	Modular 120 way patchbay, expandable to 144 ccts. Fitted with Test Module.
RBP/132	Modular 132 way patchbay, expandable to 144 ccts.
RBP/132/T	Modular 132 way patchbay, expandable to 144 ccts. Fitted with Test Module.
RBP/144	Modular 144 way patchbay.
RBP/144/T	Modular 144 way patchbay. Fitted with Test Module.
RBP/156	Modular 156 way patchbay, expandable to 240 ccts.
RBP/156/T	Modular 156 way patchbay, expandable to 240 ccts. Fitted with Test Module.
RBP/168	Modular 168 way patchbay, expandable to 240 ccts.
RBP/168/T	Modular 168 way patchbay, expandable to 240 ccts. Fitted with Test Module.
RBP/180	Modular 180 way patchbay, expandable to 240 ccts.
RBP/180/T	Modular 180 way patchbay, expandable to 240 ccts. Fitted with Test Module.
RBP/192	Modular 192 way patchbay, expandable to 240 ccts.
RBP/192/T	Modular 192 way patchbay, expandable to 240 ccts. Fitted with Test Module.
RBP/204	Modular 204 way patchbay, expandable to 240 ccts.
RBP/204/T	Modular 204 way patchbay, expandable to 240 ccts. Fitted with Test Module.
RBP/216	Modular 216 way patchbay, expandable to 240 ccts.
RBP/216/T	Modular 216 way patchbay, expandable to 240 ccts. Fitted with Test Module.
RBP/228	Modular 228 way patchbay, expandable to 240 ccts.
RBP/228/T	Modular 228 way patchbay, expandable to 240 ccts. Fitted with Test Module.
RBP/240	Modular 240 way patchbay.
RBP/240/T	Modular 240 way patchbay. Fitted with Test Module.

RBP/A	1RU Redback Patch panel with leads - for fitting into 3rd party sealed rack cabinets
RBP/T	1RU Redback Patch Test Module with Dimmer Test cct, digital ammeter and test outlet. Requires hardwired 10A power input when installed.

### Options

RBP/CMS	Cable Management System for 12 channels
LED-LITE	15" LED gooseneck light for Test Module

### Redback Outlet Panels - Convert rear panel outlets to front panel outlets

OP12/10A	2RU 12 x 10A Outlet Panel with 1.2m cables on the rear.
OP12/15A	2RU 12 x 15A Outlet Panel with 1.2m cables on the rear.
OP6/25A	2RU 6 x 25A Outlet Panel with paired 20/10A outlets, 1.2m cables on the rear.

The optional digital Test Module **RBP/T** completes the Patch Bay system by bringing safe and reliable load and source testing with overload indicators and circuit protection.



Front View **RBP/144/T**



**RBP/T**



**RBP/A**



**RBP/CMS**



**OP12/10A**

Cable Patchbays





The **LDT** was designed to provide professional theatrical quality dimming of dimmable LED globes, both in retrofit installations and new fitouts.

Many LED globes and LED controllers claim to dim LED lamps, but many drop out at 20-40%, or flicker at lower levels, which makes them totally unsuitable for use in house lighting systems in theatres, churches, cinemas and other entertainment venues—where the requirement is smooth dimming to 0%.

The **LDT** uses Patented LED Drive Technology that greatly increases the effective control range of dimmable



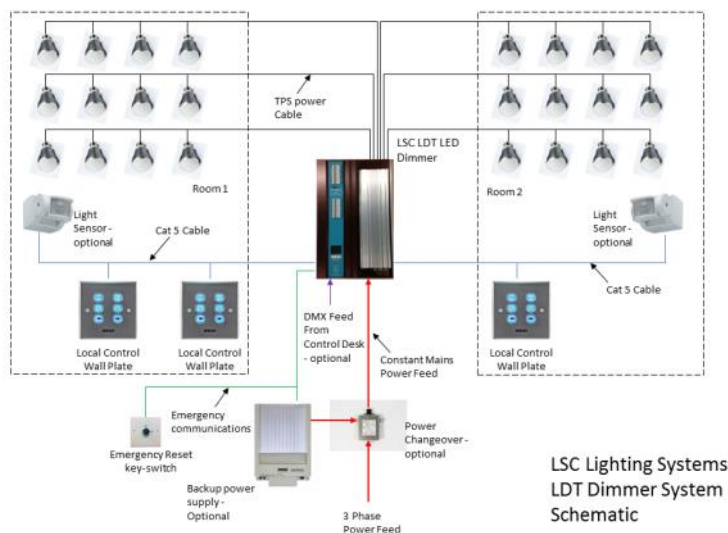
LDT 6 channel

LED globes. If a LED can be dimmed the **LDT** will do it better than virtually any other dimmer available.

Easy standalone control is provided by the Redback wallplates, and the **LDT** can also switch to DMX control when required.

Lamp choice is critical to achieve true theatrical dimming of LED fixtures and LSC can advise which brands and models of LED globes and fixtures are best for your installation.

For maximum flexibility each channel of the **LDT** can be configured to control either LED or up to 10A of conventional dimming, to allow for a mixture of LED and filament loads to be run from the one rack.



CODE	DESCRIPTION
<b>LDT LED drive technology</b>	
LDT6	<b>LDT</b> 6ch x 10A LED drive technology dimmer rack.
LDT12	<b>LDT</b> 12ch x 10A LED drive technology dimmer rack.
<b>Options</b>	
RBW/DMX	Optional DMX connector plate with XLR5 In & Thru connectors. Fitted with 30cm flylead and PCB connector for connection to CPU card
<b>Wallplates for remote recall of LDT memories</b>	
RBR/1	1 button wall plate remote for Redback Wallmount range
RBR/2	2 button wall plate remote for Redback Wallmount range
RBR/6	6 button wall plate remote for Redback Wallmount range



## More Dimming Less Compromise

# RED3

Portable Dimmers



The NEW **RED3** dimmer is designed to become the benchmark for affordable dimming in smaller venues including schools and houses of worship.

Extensive engineering has been done to reduce the cost, whilst retaining the legendary LSC quality - and like all **LSC** products, it is **Made In Australia**.

The **RED3** is housed in a 3RU 19" rack mount chassis. It has 12 channels of dimming, each protected by a 10A Thermal Magnetic circuit breaker (MCB), and the **RED3** has a 100% duty cycle, to ensure that it can run all day and night without any issues.

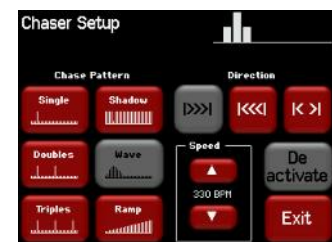
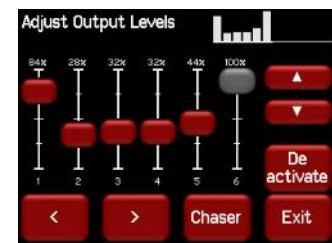
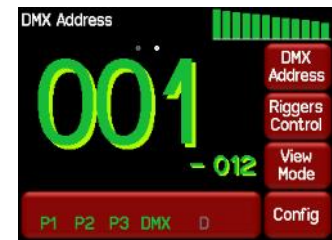
A full colour touchscreen provides a clear display of the dimmer status and easy configuration of the user settings including DMX address, fade curve, Min/Max levels and DMX loss action. All **RED3** dimmers are supplied with a 1m flying lead for power input, fitted with a 32A 3-phase plug.



Australian GPO Outputs



Terminal Outputs

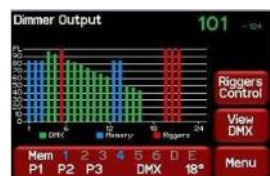


CODE	DESCRIPTION
	<b>Red3 rack mount dimmer</b>
RED12/10A	<b>RED3</b> 12ch x 10A Dimmer rack. Fitted with <b>Australian 10A</b> output connectors
RED12/10X	<b>RED3</b> 12ch x 10A Dimmer rack. Fitted with <b>Socapex</b> output connectors
RED12/10T	<b>RED3</b> 12ch x 10A Dimmer rack. Fitted with <b>Screw Terminal</b> output connectors

# REDBACK



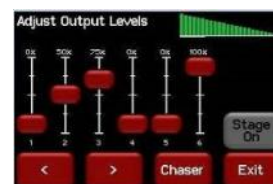
RBW12/R/A



Output Display Screen



RBW24/R/A



Riggers Control Screen

The **Redback Wallmount** has been purposely designed to solve the most common problem facing modern venues—to simultaneously control conventional lights using dimming technology and intelligent lighting fixtures and LEDs with switchable power—all in the one package!

The **Redback Wallmount** offers a true switched power (relay) control option that can be specified with all outputs as dimmers or relays only, or a combination of both. The switched power channel outputs provide direct power by using relays, guaranteeing no electronics in the way to interfere with connected loads.

Available in a variety of models the new **Redbacks** are slim-line wall mounted units permitting them to be located in areas where depth is a concern such as narrow cupboards, walkways or catwalks. The easy to use colour LCD touch screen guides you through many of the standard functions such as DMX address setting, RDM control and reporting, scene memories, full Softpatch, Panic Input set-up, Dimmer Curves, display of Channel levels, min and max level settings and channel Test modes.

A complementary range of brushed aluminium wall plates, with RGB buttons means that the **Redback Wallmount** can be used to control a mixture of architectural and entertainment lights in the one environment.

CODE	DESCRIPTION
	<b>6 channel Wallmount dimmer range</b>
RBW6/R/A	<b>Redback</b> Wallmount 6 channel x 10A dimmer with 3pin <b>Australian GPO</b> outlets & <b>1 x three phase RCD on input</b>
RBW6/R/T	<b>Redback</b> Wallmount 6 channel x 10A dimmer with internal <b>Screw Terminal</b> outputs & <b>1 x three phase RCD on input</b>
	<b>6 channel Wallmount DMX relay range</b>
RBW6/C/R/A	<b>Redback</b> Wallmount 6 channel x 10A DMX controlled relay rack with 3pin <b>Australian GPO</b> outlets & <b>1 x three phase RCD on input</b>
RBW6/C/R/T	<b>Redback</b> Wallmount 6 channel x 10A DMX controlled relay rack with internal <b>Screw Terminal</b> outputs & <b>1 x three phase RCD on input</b>
	<b>12 channel Wallmount dimmer range</b>
RBW12/R/A	<b>Redback</b> Wallmount 12 channel x 10A dimmer with 3pin <b>Australian GPO</b> outlets & <b>1 x three phase RCD on input</b>
RBW12/R/T	<b>Redback</b> Wallmount 12 channel x 10A dimmer with internal <b>Screw Terminal</b> outputs & <b>1 x three phase RCD on input</b>
	<b>12 channel Wallmount DMX relay range</b>
RBW12/C/R/A	<b>Redback</b> Wallmount 12 channel x 10A DMX controlled relay rack with 3pin <b>Australian GPO</b> outlets & <b>1 x three phase RCD on input</b>
RBW12/C/R/T	<b>Redback</b> Wallmount 12 channel x 10A DMX controlled relay rack with internal <b>Screw Terminal</b> outputs & <b>1 x three phase RCD on input</b>
TAIL40A/S1	Optional three phase flying lead (1m) fitted with 40A plug and mounting gland
TAIL40A/S2	Optional three phase flying lead (2m) fitted with 40A plug and mounting gland
TAIL32A/S1	Optional three phase flying lead (1m) fitted with 32A plug and mounting gland
TAIL32A/S1	Optional three phase flying lead (2m) fitted with 32A plug and mounting gland



# REDBACK



## Wallmount

CODE	DESCRIPTION
	<b>12 channel Wallmount Kombo Dimmer/Relay range</b>
RBW12/K/R/A	<b>Redback</b> Wallmount Combination - 6 channel x 10A dimmer + 6 channel x 10A DMX controlled relay rack with 3pin <b>Australian GPO</b> outlets & <b>1 x three phase RCD on input</b>
RBW12/K/R/T	<b>Redback</b> Wallmount Combination - 6 channel x 10A dimmer + 6 channel x 10A DMX controlled relay rack with internal <b>Screw Terminal</b> outputs & <b>1 x three phase RCD on input</b>
	<b>24 channel Wallmount dimmer range</b>
RBW24/R/A	<b>Redback</b> Wallmount 24 channel x 10A dimmer with 3pin <b>Australian GPO</b> outlets & <b>3 x single phase RCDs on input</b>
RBW24/R/T	<b>Redback</b> Wallmount 24 channel x 10A dimmer with internal <b>Screw Terminal</b> outputs & <b>3 x single phase RCDs on input</b>
	<b>24 channel Wallmount Kombo Dimmer/Relay range</b>
RBW24/K/R/A	<b>Redback</b> Wallmount Combination - 18 channel x 10A dimmer + 6 channel x 10A DMX controlled relay rack with 3pin Australian outlets & <b>3 x single phase RCDs on input</b>
RBW24/K/R/T	<b>Redback</b> Wallmount Combination - 18 channel x 10A dimmer + 6 channel x 10A DMX controlled relay rack with internal Screw Terminal outputs & <b>3 x single phase RCDs on input</b>
	<b>24 channel Wallmount DMX relay range</b>
RBW24/C/R/A	<b>Redback</b> Wallmount 24 channel x 10A DMX controlled relay rack with 3pin Australian outlets & <b>3 x single phase RCDs on input</b>
RBW24/C/R/T	<b>Redback</b> Wallmount 24 channel x 10A DMX controlled relay rack with internal Screw Terminal outputs & <b>3 x single phase RCDs on input</b>
	<b>Options</b>
RBW/DMX	Optional DMX connector plate with XLR5 In & Thru connectors. Fitted with 30cm flylead and PCB connector for connection to CPU card
	<b>Wallplates for remote recall of Redback memories</b>
RBR/1	1 button wall plate remote for Redback Wallmount range
RBR/2	2 button wall plate remote for Redback Wallmount range
RBR/6	6 button wall plate remote for Redback Wallmount range
RBR/PB	1 button PANIC wall plate remote for Redback Wallmount range
RBR/KS	1 keyswitch PANIC Reset wall plate remote for Redback Wallmount range
RBR/PB/KS	1 button PANIC + keyswitch Reset wall plate remote for Redback Wallmount range



RBW24/R/T



DMX Address Screen



RBW/DMX Option



RBR/6 wallplate



# FILMPRO

## DIMMER RANGE



FILMPRO/6C10

In acknowledgement of the demanding requirements of the Film & TV world, LSC has introduced a new range of dimmers specifically designed to withstand the rigours and hard work demanded by the world's biggest lighting rental companies

Designed in conjunction with specialists from the Film & TV lighting industry, the **FilmPro** range has already become the No1 dimmer of choice for rental companies throughout Europe, Asia and South Africa and has showcased in 100's of feature films and TV broadcasts around the world

The **FilmPro** racks are a 4RU module with a 63A 1ph CEE input connector on the back panel for input. All the outputs and user interface are located on the front panel. Each circuit on the **FilmPro** is protected by an RCBO (combination MCB + 30mA RCD) rated at either 10A, 25A or 63A. Optional Neutral disconnect MCBs can be provided where RCDs are not desirable. The **FilmPro** utilises PTFD Dimming (Pulse Transformer Fired Dimming) so that virtually any load can be dimmed, including Fluorescents, neon, and many other complex loads. Other features include; Auto Fan Control (user defined), Self-Terminating DMX connector, Current Control Technology and Dimmer curve selection per channel.

The user interface is a simple 3-button interface with Up & Down keys and a Select button making the dimmer setup very simple even for the less experienced user

Great for Gaffas.



FILMPRO/3C25



FILMPRO/1C63

CODE	DESCRIPTION
	<b>FilmPRO dimmer range</b>
FILMPRO/6C10	<b>FILMPRO/6C10</b> - 6ch x 10A, Outputs include 6 x 16A CEE Outputs in parallel with 1 x Socapex 6ch Output and 1 x 6ch Socapex non-dim output connector. Input via 63A CEE connector on rear panel
FILMPRO/3C25	<b>FILMPRO/3C25</b> - 3ch x 25A, 3 x 32A CEE output. Input via 63A CEE connector on rear panel
FILMPRO/1C63	<b>FILMPRO/1C63</b> - 1ch x 63A, 63A CEE output. Input via 63A CEE connector on rear panel

The new **GenVI Touring Rack System** is simply the most powerful and feature-rich touring system in the world today and ensures that LSC Lighting Systems remains at the forefront in the supply of dimming and distribution to the biggest Film, TV and Production Rental companies in the world!

# GEN·VI TOURING

Offering configurations of 48 x 10A, 24 x 25A and 12 x 63A channel systems, the 3RU modules are mounted in a purpose built steel frame with a specially designed rear vented cooling system to ensure maximum efficiency and minimum noise levels. The head monitoring unit displays voltages and currents for each phase and neutral during operation and alerts the user to any fluctuations in the line supply.



The **GenVI** allows the user to configure any of its outputs, in any combination, to be an 8 bit or 16 bit dimmer or a direct **TruPower** relay channel (63A versions do not have TRUpower). This enables **GenVI** to dim traditional lamps or power moving lights, LED fixtures, video screens or audio power amplifiers—in fact anything where controlled power distribution is needed.

The colour touchscreen offers the user the ability to set each channel individually, control the outputs locally and view any external fault conditions that may be present.

As well as having local and DMX control, the **GenVI** is RDM (Remote Device Management) enabled, allowing the user to change the DMX address of the unit, and view any fault conditions including over-temperature and loss of phase or DMX signal from any RDM controller, local or remote.



TRS Head Unit

## Features include:

- User selectable Touring Dimmer or Power Distribution per channel.
- DMX In/Thru & Ethernet input (Art-Net, sACN and ShowNet)
- Combined MCB/RCD per channel
- Auto Power Mode - switches Relay channels On when DMX is applied and Off when DMX is no longer present
- Dimmer channels can be 8 bit or 16 bit
- RDM - Remote Device Management enabled
- On-board Help Screens
- Visual Alarms for Phase fail, over temperature and loss of DMX
- PTFD Dimming (Pulse Transformer Fired Dimming)
- Local Riggers Control
- Auto Fan Control (user defined)
- Color Touchscreen with simple and intuitive navigation
- 400A Powerlock in/thru
- 32A 3 Phase CEE output
- 16A CEE output
- Phase neon indicators on front & rear
- Internal front work light with level control and blue/white color option
- Quality flight case with heavy duty hardware

Each circuit on the **GenVI** is protected by an RCBO (combination MCB + 30mA RCD/GFI) protection on each circuit rated at either 10A, 25A or 63A



TRS48/13X

Location Dimming/Power

CODE	DESCRIPTION
<b>GenVI Touring Systems</b>	
TRS48/13X	<b>GenVI Touring Rack System</b> - 48ch x 10A, RCBO per channel, TruPower, ethernet+DMX input, Voltage & current monitoring. Outputs via 16 paired Socapex connectors on rear
TRS48/13X/PB	<b>GenVI Touring Rack System with Patch</b> - 48ch x 10A, RCBO per channel, TruPower, ethernet+DMX input, Voltage & current monitoring. Outputs via 16 paired Socapex connectors on rear Fitted with 2:1 Parallel patchbay with GST18 connectors and separate male/female patch leads
TRS24/25C	<b>GenVI Touring Rack System</b> - 24ch x 25A, RCBO per channel, TruPower, ethernet+DMX input, Voltage & current monitoring. Outputs via 25A CEE connectors on rear panel
TRS12/63C	<b>GenVI Touring Rack System</b> - 12ch x 63A, RCD+MCB per channel, ethernet+DMX input, Voltage & current monitoring. Outputs via 63A CEE connectors on rear panel

## Options

The TRS system is available with custom rear panel configurations to suit almost any applications  
Options include Australian GPO connectors, Socapex, Wieland, CEE, Edison, Stage-Pins, Schuko and most other connector types. Call for details.





Founded in February of 1982 by the internationally acclaimed designer Mario De Sisti, **DeSisti Lighting** has emerged as a world leader in the manufacture and distribution of top quality lighting equipment in the motion picture, television, theatre and professional photography industries.

With a strong emphasis on craftsmanship and performance, the company has been responsible for numerous major technological advances both in the electromechanical and photometric areas of luminaire development.

Based in Rome, Italy, **DeSisti** has grown to more than 110 people with an emphasis on its R & D team of 30 people. As trend setters in the entertainment industry, **DeSisti** has guided such important innovations as high CRI LED sources, flicker-free electronic ballasts, single-end high efficiency HMI lamps, motorised self-climbing hoists, telescopes and most recently, robotic controlled lighting.



The **DeSisti** name is well known in Australia. There are many hundreds of Leonardo fresnels, DeLux softlights and Giotto cyclights spread throughout virtually every TV station in the country, from Tasmania to Darwin, Perth to Sydney and also across the water in New Zealand.

**DeSisti** hoists are installed in Channel 7 Docklands studios in Melbourne, Foxtel studios in Sydney, Chapel on Chapel in Melbourne and RMIT Victoria.







## LED upgrades for DeSisti Tungsten Fresnels - 1 or 2 kW

The need to reduce energy consumption, running costs and maintenance is a driving factor in the increased use of LED lighting throughout the industry. The biggest issue with upgrading to LED is the large cost and limits on capital expenditure in many organisations.

The **DeSisti EZ-4S** LED Retrofit Kit solves both of these problems, by providing a simple upgrade path to your existing DeSisti Leonardo Fresnel fixtures. This reduces the cost of upgrading compared to purchasing brand new fixtures and may be classified as maintenance rather than CapEx.

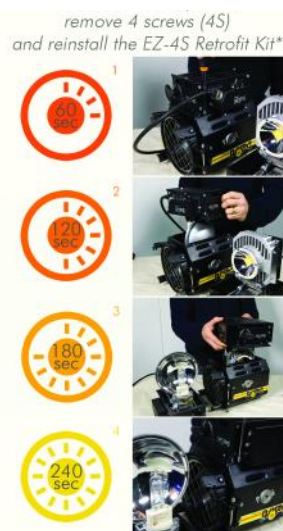
Converting your existing **DeSisti** Leonardo Tungsten 1 kW or 2 kW Fresnel fixtures to SuperLED fresnels is fast and easy:

- Purchase the relevant **EZ-4S** upgrade kit from **LSC**.
- Remove the 4 screws holding the bottom box on your existing Tungsten Fixture.
- Swap the bottom box of your existing Fresnel with the EZ-4S **DeSisti** LED Retrofit Box.
- Attach it on your Lighting fixture using the same 4 screws you had previously removed.



\*The EZ-4S includes the bottom housing with the pre-assembled LED system. The EZ-4S does not require any additional electrical terminations or mechanical modifications.

**DeSisti**®



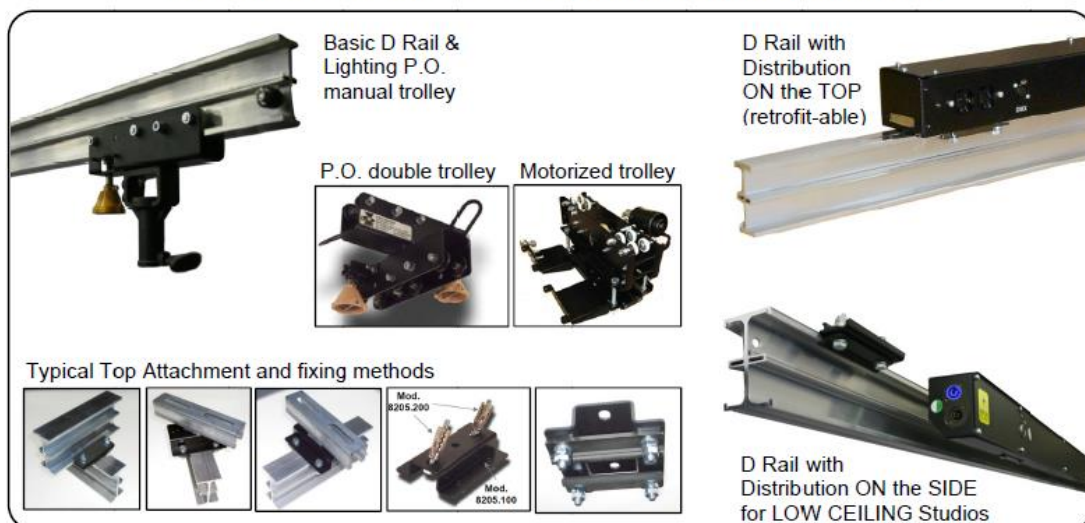
The EZ-4S system

## Rail Systems & Accessories

The **DeSisti D-Rail** system is a structurally rated, extruded aluminium track for use in studios and theatre. A range of manual and motorised trolleys are available to facilitate the attachment of lights, speakers, projectors and other items. The trolleys travel along the **D-Rail** to allow easy movement of fixtures around the grid.

**D-Rail** is available in varying lengths from 1m to 6m and can be joined to provide rails of unlimited length. They are available in both straight and curved variants, the latter with a minimum radius curve of 1m to allow fixtures to move around corners.

### "D RAIL": Aluminium Extruded Profiles for High Mobility Rigging/Lighting



### Accessories

- Swivel Trolleys for 'pipe and barrel' style movable grids
- Manual or Motorised Trolleys with standard spigot receivers
- Drop Arms, Clamps and fixing assemblies
- Lightweight Spider pantographs
- Lighting Poles, manual and motorised

CODE	DESCRIPTION
DES/	<b>DeSisti</b> Please contact the LSC office for DeSisti part numbers and detailed product descriptions

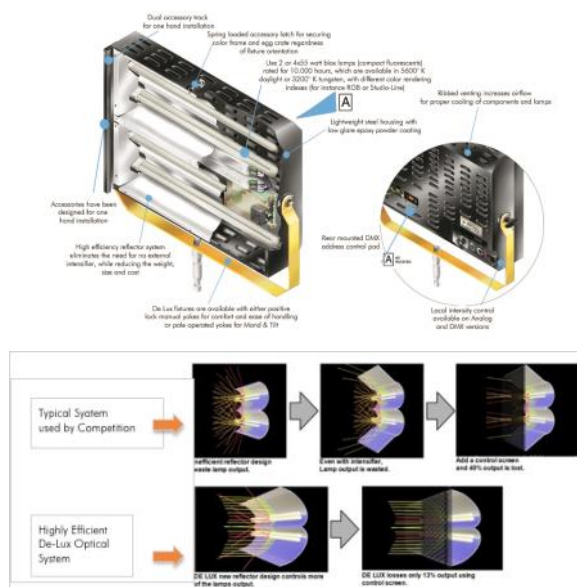


## De-Lux Fluorescent Softlight

The **De-Lux** range of softlights provide unparalleled performance in a compact unit.

The high efficiency reflector system eliminates the need for awkward external intensifiers, whilst reducing the weight, size and cost. **De-Lux** fixtures are 40% brighter than other fixtures using the same lamp/ballasts.

Control options include Phase Control (to allow operation via existing dimmers), Analog (0-10v) or DMX, with local control included on the latter two variants.



They use standard 55w biax fluorescent lamps, rated for 10,000 hours and available in both 3200°K and 5600°K colour temperatures, with different colour rendering indexes to suit the application (e.g. Studio-Line or RGB).

**De-Lux** fixtures are available with either positive locking manual yokes for comfort and ease of handling, or pole operated yokes that can be operating via lighting pole, as well as manually when required, due to the internal clutch system.



The accessories are secured regardless of orientation of the fixture, and are designed to be fitted and removed with one hand.

## Soft-LED studio LED softlights

The **Soft-LED** is high power LED Softlight with an exceptionally high CRI (>95) and a light output almost twice that of similar power Fluorescent fixtures.

This innovative range is the perfect answer to the lighting designer looking for fixtures with incredibly even light distribution, very soft shadows and proper control of the beam via honeycombs that actually work - making them ideal for multiple camera use in the studio. The remote phosphor insert ensures no Pixel shadow effect, as the phosphor provides a single solid source of light, whilst allowing easy change over between Daylight and Tungsten colour temperature.

The **Soft-LED** fixtures are lightweight, compact and very energy efficient. The small size is ideal for today's smaller studios and the low energy requirements allow for an entire rig to be powered from a single 10A outlet. The minimal heat output also greatly increases talent comfort.

Available in a choice of Manual or Pole operation, the full range dimming is controlled by DMX and the LEDs are supplied with DC throughout the 0 to 100% dimming range, for a full FLICKER FREE operation and super smooth cross fades.

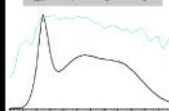


Led Leonardo 10 D CRI90 : CCT = D5751 (+0.9)  
TLCI-2012 : 92 (D5751)



Television Lighting Consistency Index-2012

Index	Lightness	Chroma	Hue
B	0.0	0.0	0.0
W	0.0	0.0	0.0
Y	0.0	0.0	0.0
TC	0.0	0.0	0.0
G	0.0	0.0	0.0
C	0.0	0.0	0.0
B	0.0	0.0	0.0
W	0.0	0.0	0.0
B	0.0	0.0	0.0
B	0.0	0.0	0.0



TLCI (CRI=92)

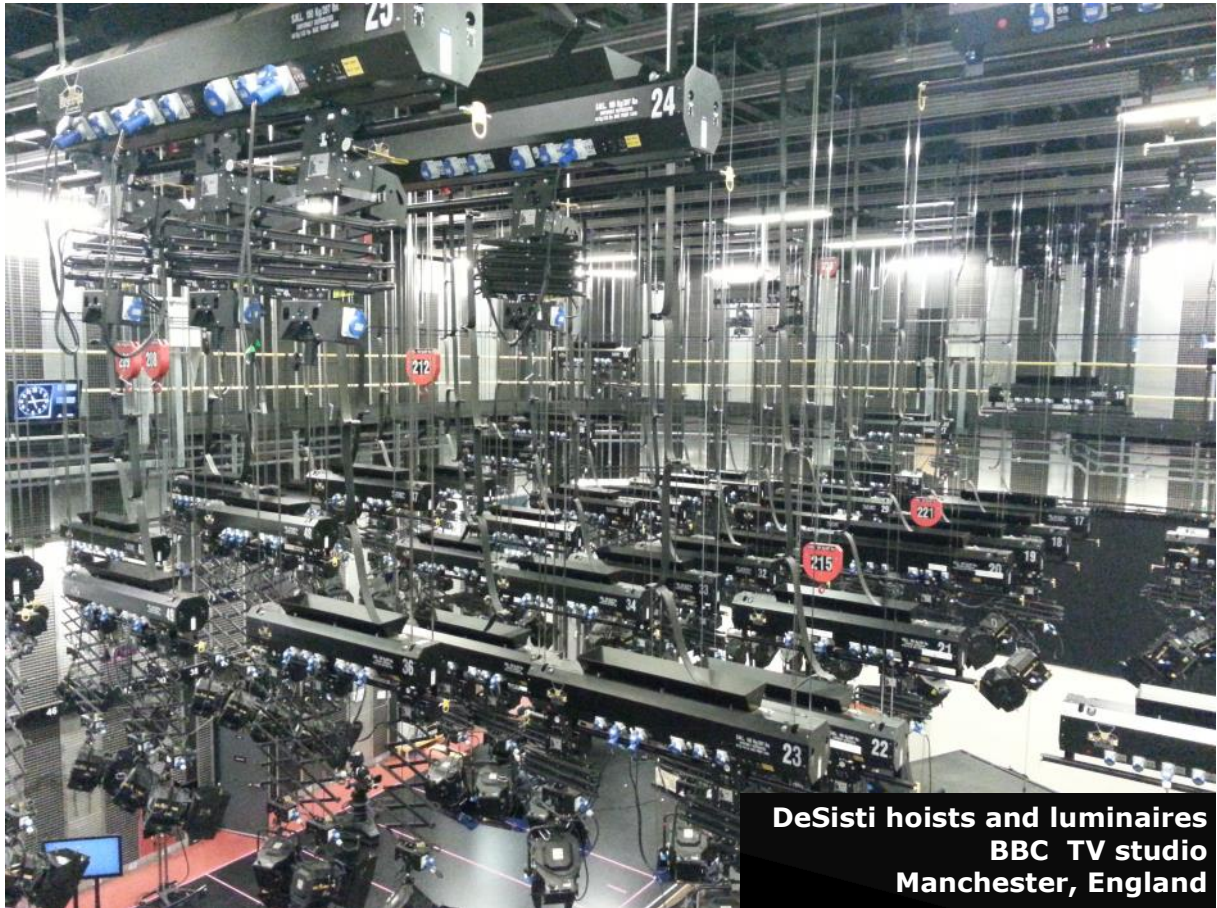
CODE DESCRIPTION

DeSisti

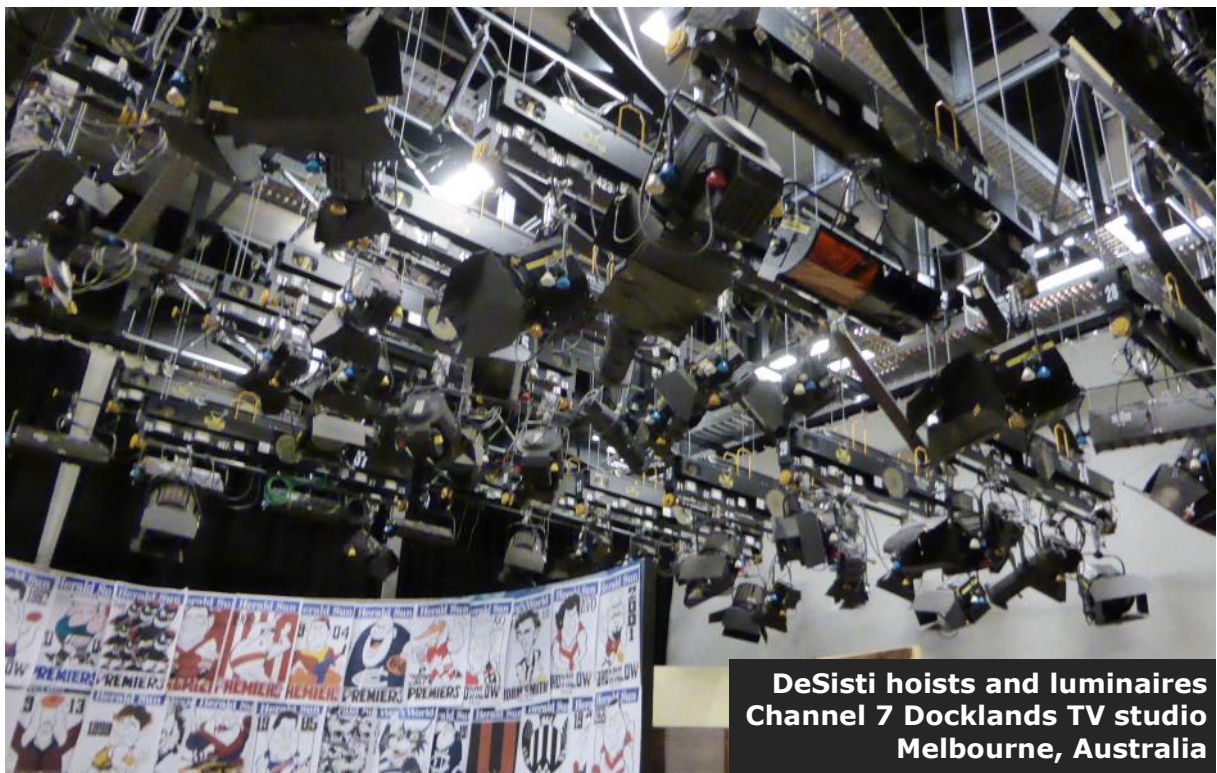
DES/

Please contact the LSC office for DeSisti part numbers and detailed product descriptions





**DeSisti hoists and luminaires**  
**BBC TV studio**  
**Manchester, England**

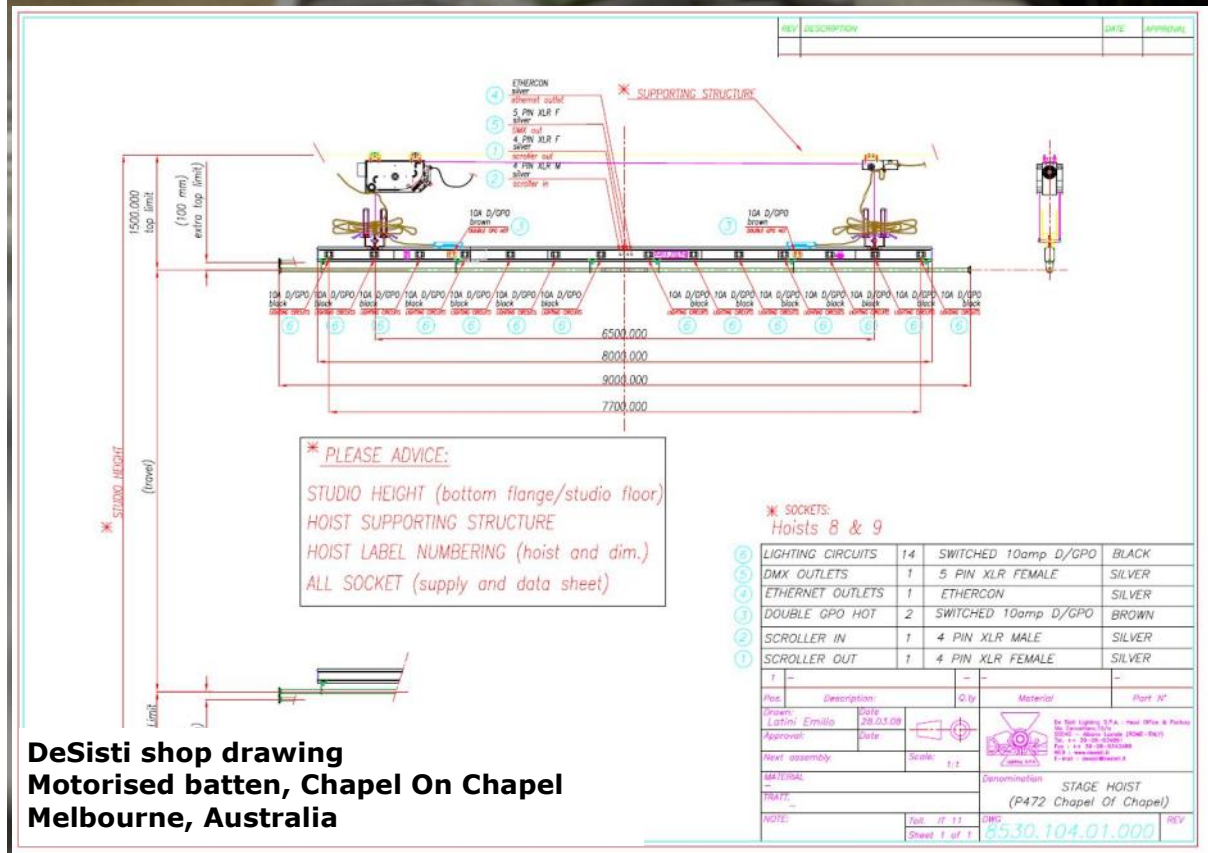


**DeSisti hoists and luminaires**  
**Channel 7 Docklands TV studio**  
**Melbourne, Australia**





DeSisti LED module assembly  
Rome, Italy



DeSisti shop drawing  
Motorised batten, Chapel On Chapel  
Melbourne, Australia





## LED Fresnel Super Series and LED Fresnel Standard Series

The third generation of **LED Fresnels** from **DeSisti** is now available, providing a much higher Output (> 50% brighter in full flood than the previous version) and with a CRI >90 in both the Tungsten and the Daylight Balanced CCT versions.

These improvements have been made without compromising the optical refinement for which **DeSisti LED Fresnels** are renowned. The beam behaves exactly like a conventional Fresnel, with full barn door control, proper shadows and a smooth field - something most other LED fixtures cannot achieve.

The LED array is controlled by a DC power supply, ensuring Flicker Free operation at any Shutter or Frame/Picture speed, and dims smoothly up and down, from a true 0% to 100% without any sudden jump in level.

The custom LED arrays are designed to match existing fixtures perfectly.

The Tungsten Balanced CCT versions have been successfully verified with Professional Cameramen in TV



DeSisti LED Fresnels



LED Fresnel Standard Series

Studios in order to be combined with conventional Filament Lamp Fixtures.

The new Daylight versions are rated at 5.600°K with the CRI greater than 90 and are matching other types of available sources in the market such as HMIs and Daylight Fluorescents. The Daylight version is also ideal for studios with large Plasma/LCD screens running at 5600°K

Completely silent in operation the new **DeSisti LED Fresnels** raise the standard for the Professional Lighting Industry's choice for HIGH QUALITY, HIGH EFFICIENCY and ENERGY SAVING White sources.



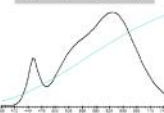
LED Fresnel Super Series

LED Leonardo 10 T CRI90 CCT = P3025 (+0.5)  
TLCI-2012: 90 (P3025)



Television Lighting Consistency Index-2012

Sector	Lightness	Chroma	Blue
R	0	0	0
RY	0	0	0
Y	0	0	0
YG	0	0	0
G	0	0	0
GC	0	0	0
C	0	0	0
CB	0	0	0
B	0	0	0
BB	0	0	0

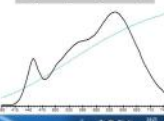


Soft 2 hor 3m cono 8-3-2014 : CCT = P3235 (+0.5)  
TLCI-2012: 97 (P3235)



Television Lighting Consistency Index-2012

Sector	Lightness	Chroma	Blue
R	0	0	0
RY	0	0	0
Y	0	0	0
YG	0	0	0
G	0	0	0
GC	0	0	0
C	0	0	0
CB	0	0	0
B	0	0	0
BB	0	0	0



## TLCI: the appropriate COLOURIMETRY INDEX from EBU

The **DeSisti LED Fresnels** are already utilised by Major Professional Lighting Designers and TV Stations such as FoxSports, Channel 10, BBC, BSKYB, ITV, ESPN, RAI and many others.

**DeSisti** has installed in the last 2 years more than 8,000 pieces of professional LED Fixtures at the most prestigious TV Stations around the world.

At the same time **DeSisti** is adhering to the European Broadcasting Union recommendation for the appropriate measuring and characterization method for documenting the colorimetric parameters of LED sources.

**DeSisti** is now including in the Data Sheet the measurements of the TLCI (Television Lighting Consistency Index) based on the EBU measuring system (<https://tech.ebu.ch/publications>), which is the ideal method to identify the appropriate quality of a LED Lighting Fixture to be used for Professional Cameras. It is important to notice that EBU (European Broadcasting Union) defines a Top Quality Lighting Fixture if its TLCI is >85 .....all the new De Sisti LED products have a TLCI >90, meaning they are the ideal LED sources for professional lighting.

### CODE DESCRIPTION

DES/ **DeSisti**

Please contact the LSC office for DeSisti part numbers and detailed product descriptions



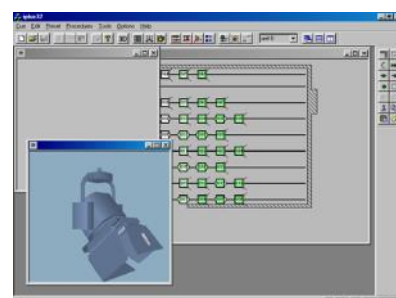
## Professional Rigging Products

Drawing on many years of Industry experience, the Project Design team at **DeSisti** can assist in all aspects of a Studio/Theatre refit or clean-sheet design. Services can include complimentary Studio design, budget and preliminary drawing submittal, structural and electrical engineering, project management, installation supervision and full personnel training

- Mini SPIDER , Pole Operated Pantograph Range for 30kg SWL
- SPIDER JUNIOR Pole Operated & Motorised Pantograph Range for 40kg SWL
- SPIDER SENIOR Motorised Pantograph range for 80kg SWL
- TELESCOPE for 80kg SWL with many types of Manual & Motorised trolleys
- Lite MINI HOIST with Band Technology 100kg SWL
- MINI HOIST with Band Technology 120kg SWL
- HD SELF CLIMBING HOIST with Band Technology 210kg SWL
- HD TOP GRID HOIST with Band Technology 210kg SWL
- SCENERY HOIST with band Technology 200kg SWL
- THEATRICAL HOISTS for 250kg & 460kg - from 4m to 15 m. length



Theatrical Hoist—12m



Icarus Control System

SELF CLIMBING HOISTS: up to 210 kg. SWL



GRID HOISTS: up to 250 kg. SWL



H.D. GRID HOISTS: up to 500 kg. SWL



SCENERY HOISTS: up to 350 kg. SWL



Self contained

Top Grid Cabinet

LITE MINI HOISTS: up to 100 kg. SWL



SPIDER JUNIOR: Rigging Products to suspend Single Lights

MOTORIZED Versions  
40 kg. SWL



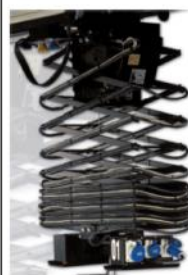
POLE OPERATED Versions  
40 kg. SWL



SPIDER SR. & TROLLEYS: Rigging Products to suspend Single Lights

65 kg. SWL

Rail Type  
Manual or Moto trolley



65 kg. SWL

Robotic Type  
Motorized Trolley  
Positioning Ctrl



65 kg. SWL

Robotic Type  
3 axis: Motorized  
Hor. Vert. Rotation



MINI SPIDER : Rigging Products to suspend Single Lights

POLE OPERATED Versions 30 kg. SWL



### CODE

### DESCRIPTION

DES/

**DeSisti**

Please contact the LSC office for DeSisti part numbers and detailed product descriptions





## Location Lighting Products

**DeSisti** make an extensive range of location lighting fixtures. The bodies are all constructed of Aluminium to ensure long life without rusting. The modular construction allows for servicing and replacement of parts should they get dropped, as well as providing better heat management.

All fixtures use convection cooling without fans, for silent operation. The electronic ignitor is made in-house by **DeSisti** and is designed for reliable operation and low noise.

The range includes:

- **Rembrandt** Daylight Fresnels, from 200w to 12/18kW
- **Goya** Discharge Broadlights/Shadowlights, from 400w to 6/12kW
- **Remington** Daylight Pars, From 575w to 6/12kW

**DeSisti**®



REMBRANDT 575

REMINGTON 575



REMBRANDT 1.2/2.5kW



GOYA 2.5/4kW



REMINGTON 2.5/4kW



REMBRANDT 12/18kW

## DEB - DeSisti Electronic Ballasts

- **DEB** electronic flicker-free ballasts, from 200w (battery powered) through to 12/18kW - all with automatic output protection.
- High/Low voltage protection - protects from accidental 415v and brown outs.
- 16 character LED display with waterproof buttons for user setting and data logging readout.
- **Dual power** mode, use the one ballasts with different powered heads, reducing the need to carry extra equipment.
- Short circuit and Arc to ground protection. Keeps your ballast working after connection to faulty heads.
- **Low Noise / Flicker Free** selection
- **Power Factor Correction.**
- Local or DMX control
- **Hot re-strike**



DEB 6/12kW



DEB 200w D.C.  
(24-30v)



DEB 200w



DEB 575/1200w



DEB 1200/2500w



DEB 6/12kW

CODE	DESCRIPTION
DES/	<b>DeSisti</b> Please contact the LSC office for DeSisti part numbers and detailed product descriptions

## Recent projects featuring LSC Lighting Systems products around the world

Canberra Theatre, Australia  
 QPAC Theatre, Brisbane, Australia  
 The Arts Centre, Gold Coast, Australia  
 Seymour Centre, Sydney, Australia  
 Wesley College, Melbourne, Australia  
 Geelong Grammar School, Australia  
 Pinewood MBS Film Studios, UK  
 CineLease, London, UK  
 Warner Brothers, London UK  
 Panalux, London, UK  
 TCN9 TV, Sydney, Australia  
 GTV9 TV, Melbourne, Australia  
 QTQ9, Brisbane, Australia  
 NTD9, Darwin, Australia  
 ABC TV, Melbourne, Australia  
 ABC TV, Brisbane, Australia  
 ABC TV, Darwin, Australia  
 ATV7, Melbourne, Australia  
 BTQ7, Brisbane, Australia  
 ATN7, Sydney, Australia  
 Fox Sports, Melbourne, Australia  
 Fox Studios, Moore Park, Australia  
 TEN10, Sydney, Australia  
 ADS10, Adelaide, Australia  
 SBS, Sydney, Australia  
 Global TV, Sydney, Australia  
 Herald Sun, Melbourne, Australia  
 Mediatec, Melbourne, Australia  
 The Footy Show, Australia  
 Biggest Loser, Australia  
 My Kitchen Rules, Australia  
 Brisbane Entertainment Centre, Australia  
 Brolga Theatre Maryborough, Australia  
 Victorian Arts Centre, Australia  
 Hillsong Church, Australia  
 Melbourne Museum, Australia  
 Australian War Memorial, Canberra, Australia  
 DJ Tiesto, Australasian Tour  
 Gladstone Entertainment Centre, Australia  
 Hawkes Bay Opera House, New Zealand  
 Rugby World Cup, New Zealand  
 Brisbane Conv & Exhibition Centre, Australia  
 Adelaide Convention Centre, Australia  
 Pilbeam Theatre, Australia  
 Moncrief Theatre, Australia  
 Mackay Entertainment Centre, Australia  
 Jupiters Casino Theatre, Australia  
 Channel 4 TV Studios, London 2012  
 Paralympics London 2012, UK  
 BBC TV, UK  
 ITV TV, UK

Lords of the Rings, New Zealand  
 Superman, UK  
 James Bond, UK  
 AFM Film Lighting, UK  
 Alabama-USA Tour  
 Furthur USA Tour  
 FloydFest, USA  
 Public Enemy, USA  
 LL Cool J, USA  
 Kimbra, World Tour  
 Outside-Lands Festival, USA  
 Glastonbury Festival, UK  
 Cut Copy World Tour  
 ICE T, USA Tour  
 Selah Sue European Tour  
 National Gallery, Bangladesh  
 Nurburgring, Germany  
 Front 242, European Tour  
 Freestyler Club, Serbia  
 NTV Studios, Turkey  
 Marina Bay Sands, Singapore  
 King Faisal University, Saudi Arabia  
 Sky TV, Middle East  
 Chelsea FC TV Studios, UK  
 Hooverphonics, European Tour  
 Ozark Henry, European Tour  
 Kasabian, European Tour  
 Vancouver Winter Olympics, Canada  
 The Orangerie, Maritim Hotel, Germany  
 Kingsmead School, UK  
 Primus Festival, Democratic Republic of Congo  
 Universidad Tecnica Federico, Spain  
 Eurovision Song Contest, Norway  
 Ten Tenors World Tour,  
 Erykah Badu World Tour  
 Silly Tour, Germany  
 Strawberry Fields Festival, UK  
 The National Theatre, London-UK  
 Nina Badric Tour, Belgrade, Serbia  
 World Expo, Japan  
 Putrajaya Convention Centre, Malaysia  
 The Esplanade Theatres - Singapore  
 Bolshoi Ballet, Russia,  
 Allhambra Palace, Spain  
 The Power Station, Singapore  
 Canal 9, Argentina  
 Nova TV, Croatia,  
 Teatro Alcobendas, Spain  
 Crown Casino, Australia  
 Sochi Winter Olympics 2014

and many more...





## LSC LIGHTING SYSTEMS (AUST) PTY LTD

### HEAD OFFICE

65-67 Discovery Road Dandenong South  
Victoria 3175 Australia

Telephone **+61 3 9702 8000**  
Email **[info@lsclighting.com.au](mailto:info@lsclighting.com.au)**  
Web **[lsclighting.com.au](http://lsclighting.com.au)**